

PERFORMANCE DATA SHEET

2237

Monoclonal anti-human CD19/APC*

mAb name/Clone: BU12

Isotype: Mouse IgG1

Immunogen: Human EB-4 Burkitt lymphoma cell lin

CATALOG#: 168-060

QUANTITY: 120 tests

VOLUME IN VIAL: 0.2 ml

WORKING DILUTION: 1:50 (or use 1.6µl of concentrated stock per 5 x 10⁵-cell test)

INFORMATION: Human CD19 is a B cell restricted membrane protein expressed from early stages of B cell development and associates with the antigen receptor complex. CD19 is involved in the regulation of B cell proliferation but eventually disappears from plasma cells. Antibody BU12 recognizes the CD19 molecule of about 95 kd. Antibody BU12 induces adhesion of B cells.

References: D.T. Fearon & R.H. Carter, (1995) Annu Rev Immunol **13**: 127-149. Leukocyte Typing V (S.F. Schlossman, et al, eds.) Oxford University Press, Oxford, (1995) p. 507-511. S. Behr & F. Schriever, (1995) J Exp Med **182**: 1191-1199

STORAGE CONDITIONS: Store at 2 - 5°C. Do not freeze! Protect from light.

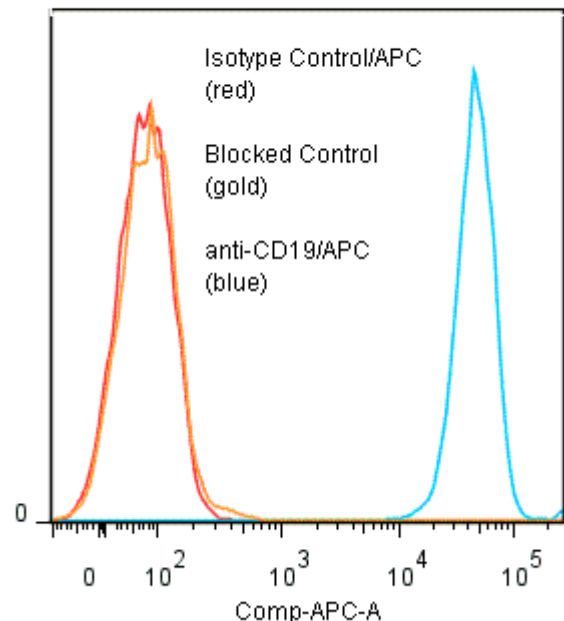
PRODUCT STABILITY: Product should retain activity for at least 12 months after shipping date when stored as recommended. Ship Date: _____

BUFFER: 50 mM Sodium Phosphate pH 7.5, 500 mM Potassium Chloride, 150mM NaCl, 15% Glycerol, 0.2% BSA, 0.04% NaN₃ (as a preservative).

PRODUCTION: Protein A purified antibody from tissue culture supernatant was conjugated to cross-linked Allophycocyanin through a sulfo-ester linkage. Unconjugated antibody was removed using size exclusion chromatography. Antibody conjugate is at approximately 0.5 mg/ml with an A₆₅₀/A₂₈₀ ratio of 1.96.

PERFORMANCE: Five x 10⁵ cultured Raji human tumor cells were washed and incubated 45 minutes on ice with 80 ul of anti-CD19/R-PE at a 1:50 dilution (10µg/ml). Cells were washed three times, fixed and analyzed by FACS using a lymphoid gate. Cells stained positive with a mean shift of 2.76 log₁₀ fluorescent units when compared to a buffer control. Binding was blocked when cells were pre incubated 10 minutes with 20 µl of 0.5 mg/ml anti-CD19 antibody (Catalog #168-020).

Binding of anti-CD19/APC to human Raji cells



* **Research Use Only. Not for use in Diagnostic procedures.**