

PERFORMANCE DATA SHEET

1746

Monoclonal anti-human CD19/FITC*

mAb name/Clone: BU12

Isotype: Mouse IgG1

Immunogen: Human EB-4 Burkitt lymphoma cell line

CATALOG#: 168-040

QUANTITY: 120 tests

VOLUME IN VIAL: 0.2ml

WORKING DILUTION: 1:50 (or use 1.6µl of concentrated stock per 5×10^5 -cell test)

INFORMATION: Human CD19 is a B cell restricted membrane protein expressed from early stages of B cell development and associates with the antigen receptor complex. CD19 is involved in the regulation of B cell proliferation but eventually disappears from plasma cells. Antibody BU12 recognizes the CD19 molecule of about 95 kd. Antibody BU12 induces adhesion of B cells.

References: D.T. Fearon & R.H. Carter, (1995) Annu Rev Immunol **13**: 127-149. Leukocyte Typing V (S.F. Schlossman, et al, eds.) Oxford University Press, Oxford, (1995) p. 507-511. S. Behr & F. Schriever, (1995) J Exp Med **182**: 1191-1199.

STORAGE CONDITIONS: Store at 2 - 5°C. Freeze/Thawing is not recommended. Protect from light.

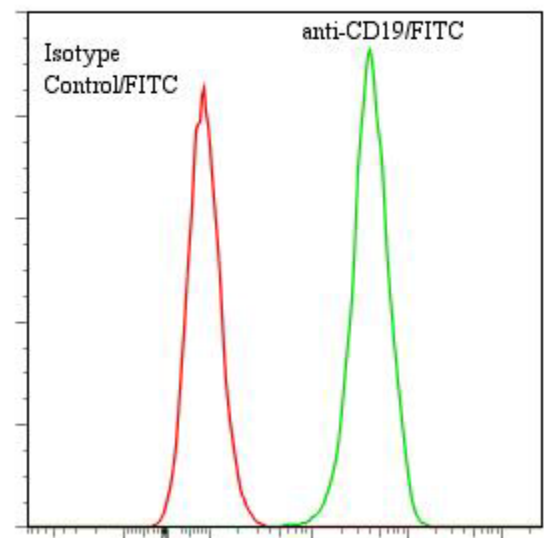
PRODUCT STABILITY: Product should retain activity for at least 12 months after shipping date when stored as recommended. Ship Date: _____

BUFFER: 50 mM Sodium Phosphate pH 7.5, 100 mM Potassium Chloride, 150mM NaCl, 5% Glycerol, 0.2% BSA, 0.04% NaN₃ (as a preservative).

PRODUCTION: Protein A purified antibody from tissue culture supernatant was reacted with FITC. Unconjugated FITC was separated from antibody/FITC conjugate by desalting column. The antibody/FITC conjugate is at **0.5 mg/ml** with a Fluorescein/IgG molar ratio of 6.1.

PERFORMANCE: Five $\times 10^5$ cultured **Raji** cells were incubated 45 minutes on ice with 80 µl of anti-CD19/FITC at a **1:50** dilution (10 µg/ml). Cells were washed three times, fixed and analyzed by FACS. Cells stained positive with a mean shift of **1.69** log₁₀ fluorescent units when compared to a Mouse IgG1/FITC negative control (Catalog # 278-040). Binding was blocked when cells were pre incubated 10 minutes with 20 µl of 0.5 mg/ml anti-CD19 antibody (Catalog #168-020).

Binding of anti-CD19/FITC to human Raji cells



* **Research Use Only. Not for use in Diagnostic procedures.**