

PERFORMANCE DATA SHEET

1828

Monoclonal anti-human CD19/Biotin*

mAb name/Clone: BU12

Isotype: Mouse IgG1

Immunogen: Human EB-4 Burkitt lymphoma cell line

CATALOG#: 168-030

QUANTITY: 100 µg

CONCENTRATION: 1.0 mg/ml

INFORMATION: Human CD19 is a B cell restricted membrane protein expressed from early stages of B cell development and associates with the antigen receptor complex. CD19 is involved in the regulation of B cell proliferation but eventually disappears from plasma cells. Antibody BU12 recognizes the CD19 molecule of about 95 kd. Antibody BU12 induces adhesion of B cells.

References: D.T. Fearon & R.H. Carter, (1995) Annu Rev Immunol **13**: 127-149. Leukocyte Typing V (S.F. Schlossman, et al, eds.) Oxford University Press, Oxford, (1995) p. 507-511. S. Behr & F. Schriever, (1995) J Exp Med **182**: 1191-1199.

STORAGE CONDITIONS: Store at 2 - 5°C. Freeze/thawing not recommended.

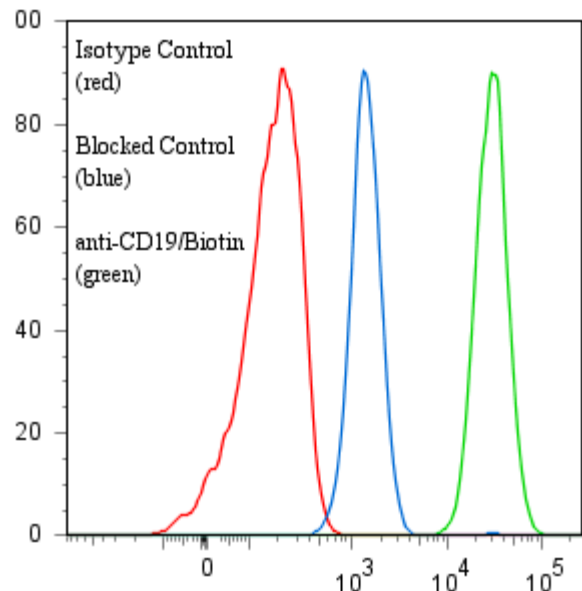
PRODUCT STABILITY: Product should retain activity for at least 12 months after shipping date when stored as recommended. Ship Date: _____

BUFFER: 50 mM Sodium Phosphate pH 7.5, 100 mM Potassium Chloride, 150mM NaCl, 5% Glycerol, 0.2% BSA, 0.04% Na₃ (as a preservative).

PRODUCTION: Antibody from (low FBS containing) tissue culture supernatant was Protein A purified to >95% mouse immunoglobulin by SDS-PAGE (<1% bovine immunoglobulin), and reacted with NHS-Biotin. Unconjugated Biotin was removed from conjugate using a desalting column.

PERFORMANCE: Five x 10⁵ cultured **Raji** cells were washed and incubated 45 minutes on ice with 80 µl of anti-CD19/Biotin at 10 µg/ml. Cells were washed twice and incubated with 2^o reagent Streptavidin/R-Phycoerythrin (Catalog #253-050), after which they were washed three times, fixed and analyzed by FACS. Cells stained positive with a mean shift of 2.19 log₁₀ fluorescent units when compared to a Mouse IgG1/Biotin negative control (Catalog #278-030) at a similar concentration. Binding was blocked when cells were pre incubated 10 minutes with a 10-fold excess of unlabeled anti-CD19 antibody (Catalog #168-020).

Binding of anti-CD19/Biotin +SA/PE to human Raji cells



* **Research Use Only. Not for use in Diagnostic procedures.**