

PERFORMANCE DATA SHEET

1649

Monoclonal anti-human CD19*

mAb name/Clone: BU12

Isotype: Mouse IgG1

Immunogen: Human EB-4 Burkitt lymphoma cell line

CATALOG#: 168-020

QUANTITY: 100 µg

CONCENTRATION: 1.0 mg/ml

INFORMATION: Human CD19 is a B cell restricted membrane protein expressed from early stages of B cell development and associates with the antigen receptor complex. CD19 is involved in the regulation of B cell proliferation but eventually disappears from plasma cells. Antibody BU12 recognizes the CD19 molecule of about 95 kd. Antibody BU12 induces adhesion of B cells.

References: D.T. Fearon & R.H. Carter, (1995) Annu Rev Immunol **13**: 127-149. Leukocyte Typing V (S.F. Schlossman, et al, eds.) Oxford University Press, Oxford, (1995) p. 507-511. S. Behr & F. Schriever, (1995) J Exp Med **182**: 1191-1199.

STORAGE CONDITIONS: Store at 2 - 5°C. Freeze/Thawing is not recommended.

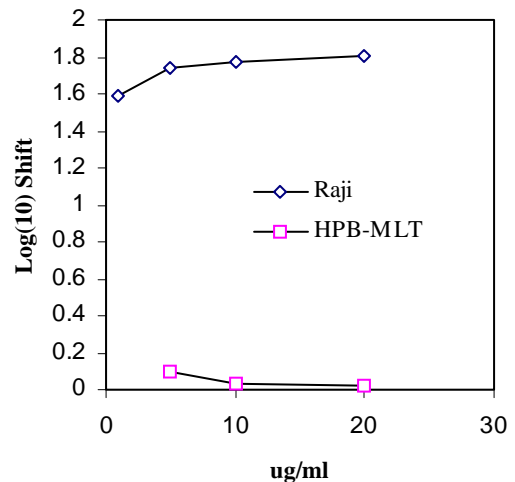
PRODUCT STABILITY: Product should retain activity for at least 12 months after shipping date when stored as recommended. Ship Date: _____

BUFFER: 50 mM Sodium Phosphate pH 7.5, 100 mM Potassium Chloride, 150mM NaCl, 0.5 mg/ml Gentamicin Sulfate (as a preservative).

PRODUCTION: Antibody was Protein A purified from (low FBS containing) tissue culture supernatant. Purity was >95% Immunoglobulin by SDS-PAGE and contains less than 1% Bovine Immunoglobulin.

PERFORMANCE: Five x 10⁵ cultured **Raji** cells were washed and incubated 45 minutes on ice with 80 µl of anti-CD19 antibody at **10 µg/ml**. Cells were washed twice and incubated with 2^o reagent Goat anti-Mouse IgG/FITC (Catalog #232-011), after which they were washed three times, fixed and analyzed by FACS. Cells stained positive with a mean shift of **1.7 log₁₀** fluorescent units when compared to a Mouse IgG1 negative control (Catalog #278-010) at a similar concentration.

Binding of anti-CD19 antibody to human cell lines



**This Product is intended for Laboratory Research use only.*