

**PERFORMANCE DATA SHEET**

1649

**Monoclonal anti-human CD19\***

**mAb name/Clone:** BU12

**Isotype:** Mouse IgG1

**Immunogen:** Human EB-4 Burkitt lymphoma cell line

**CATALOG#:** 168-020

**QUANTITY:** 100 µg

**CONCENTRATION:** 1.0 mg/ml

**INFORMATION:** Human CD19 is a B cell restricted membrane protein expressed from early stages of B cell development and associates with the antigen receptor complex. CD19 is involved in the regulation of B cell proliferation but eventually disappears from plasma cells. Antibody BU12 recognizes the CD19 molecule of about 95 kd. Antibody BU12 induces adhesion of B cells.

**References:** D.T. Fearon & R.H. Carter, (1995) Annu Rev Immunol **13**: 127-149. Leukocyte Typing V (S.F. Schlossman, et al, eds.) Oxford University Press, Oxford, (1995) p. 507-511. S. Behr & F. Schriever, (1995) J Exp Med **182**: 1191-1199.

**STORAGE CONDITIONS:** Store at 2 - 5°C. Freeze/Thawing is not recommended.

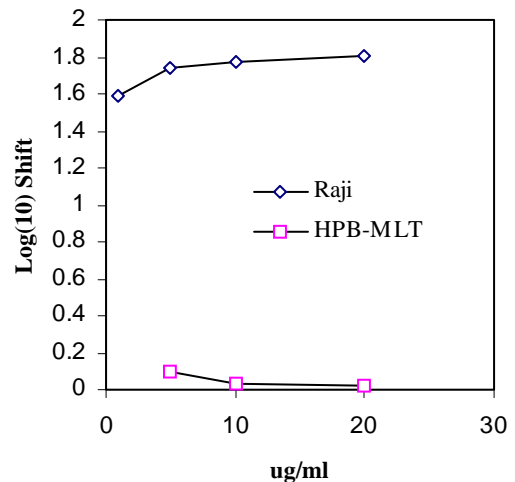
**PRODUCT STABILITY:** Product should retain activity for at least 12 months after shipping date when stored as recommended. Ship Date: \_\_\_\_\_

**BUFFER:** 50 mM Sodium Phosphate pH 7.5, 100 mM Potassium Chloride, 150mM NaCl, 0.5 mg/ml Gentamicin Sulfate (as a preservative).

**PRODUCTION:** Antibody was Protein A purified from (low FBS containing) tissue culture supernatant. Purity was >95% Immunoglobulin by SDS-PAGE and contains less than 1% Bovine Immunoglobulin.

**PERFORMANCE:** Five x 10<sup>5</sup> cultured **Raji** cells were washed and incubated 45 minutes on ice with 80 µl of anti-CD19 antibody at **10 µg/ml**. Cells were washed twice and incubated with 2<sup>o</sup> reagent Goat anti-Mouse IgG/FITC (Catalog #232-011), after which they were washed three times, fixed and analyzed by FACS. Cells stained positive with a mean shift of **1.7 log<sub>10</sub>** fluorescent units when compared to a Mouse IgG1 negative control (Catalog #278-010).

**Binding of anti-CD19 antibody to human cell lines**



\* **Research Use Only. Not for use in Diagnostic procedures.**