

**PERFORMANCE DATA SHEET**

3034

**Monoclonal anti-human CD19/APC\*****mAb name/Clone:** BU12**Isotype:** Mouse IgG1**Immunogen:** Human EB-4 Burkitt lymphoma cell lin**CATALOG#:** 168-060**QUANTITY:** 120 tests**VOLUME IN VIAL:** 0.2 ml**WORKING DILUTION:** 1:50 (or use 1.6µl of concentrated stock per 5 x 10<sup>5</sup>-cell test)

**INFORMATION:** Human CD19 is a B cell restricted membrane protein expressed from early stages of B cell development and associates with the antigen receptor complex. CD19 is involved in the regulation of B cell proliferation but eventually disappears from plasma cells. Antibody BU12 recognizes the CD19 molecule of about 95 kd. Antibody BU12 induces adhesion of B cells.

**References:** D.T. Fearon & R.H. Carter, (1995) Annu Rev Immunol **13**: 127-149. Leukocyte Typing V (S.F. Schlossman, et al, eds.) Oxford University Press, Oxford, (1995) p. 507-511. S. Behr & F. Schriever, (1995) J Exp Med **182**: 1191-1199

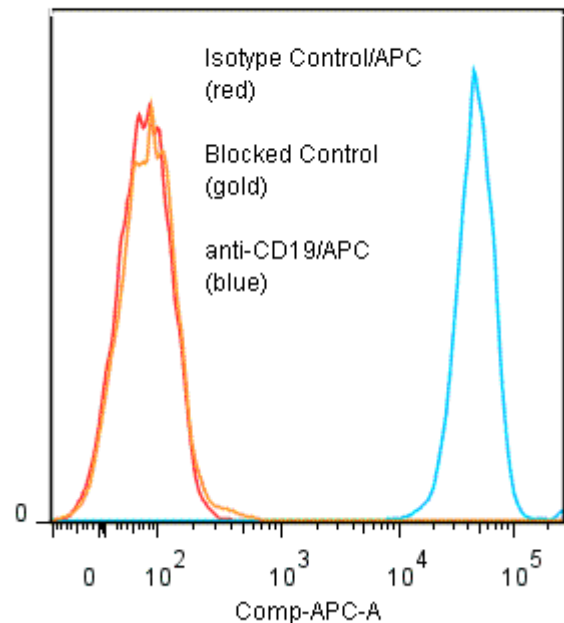
**STORAGE CONDITIONS:** Store at 2 - 5°C. Do not freeze! Protect from light.

**PRODUCT STABILITY:** Product should retain activity for at least 12 months after shipping date when stored as recommended. Ship Date: \_\_\_\_\_

**BUFFER:** 50 mM Sodium Phosphate pH 7.5, 500 mM Potassium Chloride, 150mM NaCl, 15% Glycerol, 0.2% BSA, 0.04% NaN<sub>3</sub> (as a preservative).

**PRODUCTION:** Protein A purified antibody from tissue culture supernatant was conjugated to cross-linked Allophycocyanin through a sulfo-ester linkage. Unconjugated antibody was removed using size exclusion chromatography. Antibody conjugate is at **0.5 mg/ml** with an A<sub>650</sub>/A<sub>280</sub> ratio of 1.96.

**PERFORMANCE:** Five x 10<sup>5</sup> cultured **Raji** human tumor cells were washed and incubated 45 minutes on ice with 80 ul of anti-CD19/R-PE at a **1:50** dilution (10µg/ml). Cells were washed three times, fixed and analyzed by FACS using a lymphoid gate. Cells stained positive with a mean shift of **2.76** log<sub>10</sub> fluorescent units when compared to a buffer control. Binding was blocked when cells were pre incubated 10 minutes with 20 µl of 0.5 mg/ml anti-CD19 antibody (Catalog #168-020).

**Binding of anti-CD19/APC to human Raji cells**

\* **Research Use Only. Not for use in Diagnostic procedures.**