

PERFORMANCE DATA SHEET

2129

Monoclonal anti-human CD18 (β 2 Integrin)/FITC*

mAb name/Clone: IB4

Isotype: Mouse IgG2a

Immunogen: Human peripheral blood monocytes

CATALOG#: 167-040

QUANTITY: 120 tests

VOLUME IN VIAL: 0.2 ml

WORKING DILUTION: 1:50 (or use 1.6 μ l of concentrated stock per 5 x 10⁵-cell test)

INFORMATION: Human CD18 (β 2 integrin) forms a heterodimer with either α^L , α^M , or α^X integrins (CD11a, b or c). CD11/CD18 heterodimeric molecules are involved with cell/cell and cell/extracellular adhesion in immune and inflammatory responses. Antibody IB4 recognizes the β 2 integrin subunit (CD18) adhesion molecule of about 95 kd. Antibody IB4 blocks binding of ICAM-1 and ICAM-3 to LFA-1.

References: S.D. Wright et al, (1983) Proc Natl Acad Sci USA **80**: 5699-5703. R.C. Landis et al, (1994) J Cell Biol **126**: 529-537. M. Kaneko, et al, (1995) J Immunol **155**: 2631-2641. A. Mazzone & G. Ricevuti, (1995) Haematologica **80**: 161-175.

STORAGE CONDITIONS: Store at 2 - 5°C. Freeze/Thawing is not recommended. Protect from light.

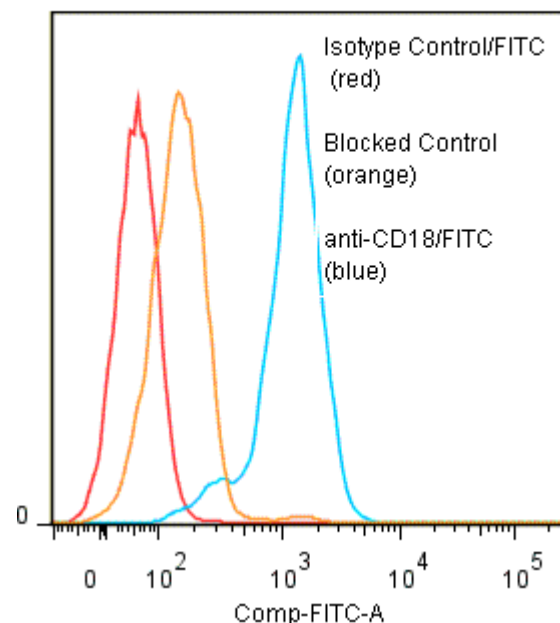
PRODUCT STABILITY: Product should retain activity for at least 12 months after shipping date when stored as recommended. Ship Date: _____

BUFFER: 50 mM Sodium Phosphate pH 7.5, 100 mM Potassium Chloride, 150mM NaCl, 5% Glycerol, 0.2% BSA, 0.04% Na₃ (as a preservative).

PRODUCTION: Antibody from (low FBS containing) tissue culture supernatant was Protein A purified to 95% Immunoglobulin by SDS-PAGE, and reacted with FITC. Unconjugated FITC was removed from conjugate using a desalting column. Antibody conjugate is at approximately 0.5 mg/ml with a Fluorescein/IgG molar ratio of 8.3.

PERFORMANCE: Five x 10⁵ cultured HPB-MLT human tumor cells were washed and incubated 45 minutes on ice with 80 μ l of anti-CD18/FITC at a 1:50 dilution (10 μ g/ml). Cells were washed three times, fixed and analyzed by FACS. Cells stained positive with a mean shift of 1.3 log₁₀ fluorescent units when compared to a Mouse IgG2a/FITC negative control (Catalog #281-040) at a similar concentration. Binding was blocked when cells were pre incubated 10 minutes with 20 μ l of 0.5 mg/ml anti-CD18 antibody (Catalog #167-020).

Binding of anti-CD18/FITC to human HPB-MLT cells



* **Research Use Only. Not for use in Diagnostic procedures.**