

**PERFORMANCE DATA SHEET**

3145

**Monoclonal anti-human CD18\*****mAb name/Clone:** IB4**Isotype:** Mouse IgG2a**Immunogen:** Human peripheral blood monocytes**CATALOG#:** 167-020**QUANTITY:** 100 µg**CONCENTRATION:** 1.0 mg/ml

**INFORMATION:** Human CD18 ( $\beta 2$  integrin) forms a heterodimer with either  $\alpha^L$ ,  $\alpha^M$ , or  $\alpha^X$  integrins (CD11a, b or c). CD11/CD18 heterodimeric molecules are involved with cell/cell and cell/extracellular adhesion in immune and inflammatory responses. Antibody IB4 recognizes the beta 2 integrin subunit (CD18) adhesion molecule of about 95 kd. Antibody IB4 blocks binding of ICAM-1 and ICAM-3 to LFA-1.

**References:** S.D. Wright et al, (1983) Proc Natl Acad Sci USA **80**: 5699-5703. R.C. Landis et al, (1994) J Cell Biol **126**: 529-537. M. Kaneko, et al, (1995) J Immunol **155**: 2631-2641. A. Mazzone & G. Ricevuti, (1995) Haematologica **80**: 161-175.

**STORAGE CONDITIONS:** Store at 2 - 5°C. Freeze/Thawing is not recommended.

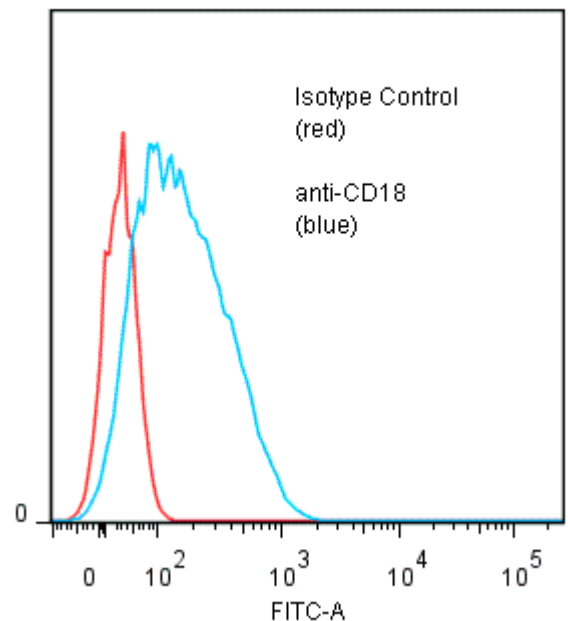
**PRODUCT STABILITY:** Product should retain activity for at least 12 months after shipping date when stored as recommended. Ship Date: \_\_\_\_\_

**BUFFER:** 50 mM Sodium Phosphate pH 7.5, 100 mM Potassium Chloride, 150mM NaCl, 0.5 mg/ml Gentamicin Sulfate (as a preservative).

**PRODUCTION:** Antibody was Protein A purified from (low FBS containing) tissue culture supernatant. Purity was >95% Immunoglobulin by SDS-PAGE with less than 1% Bovine Immunoglobulin.

**PERFORMANCE:** Five x 10<sup>5</sup> cultured human HPB-MLT cells per tube were incubated 45 minutes on ice with 80 µl of anti-CD18 antibody at a concentration of 5 µg/ml. Cells were washed twice and incubated with 2<sup>o</sup> reagent Goat anti-Mouse IgG/FITC (Catalog #232-011), after which they were washed three times, fixed and analyzed by FACS. Cells stained positive with a mean shift of 0.98 log<sub>10</sub> fluorescent units when compared to a Mouse IgG2a negative control (Catalog #281-010).

**Binding of anti-CD18 mAb + GAM/FITC to human HPB-MLT cells**



\* *Research Use Only. Not for use in Diagnostic procedures.*