

PERFORMANCE DATA SHEET

3224

Monoclonal anti-human CD16(FcγRIII)/FITC*

mAb name/Clone: 3G8

Isotype: Mouse IgG1

Immunogen: Human polymorphonuclear leukocytes

CATALOG#: 165-040

QUANTITY: 120 tests

VOLUME IN VIAL: 0.2ml

WORKING DILUTION: 1:50 (or use 1.6µl of concentrated stock per 5 x 10⁵-cell test)

INFORMATION: Human CD16 is a low affinity receptor for complexed IgG and occurs in two distinct forms, as a glycosyl phosphatidyl inositol (GPI) anchored protein in granulocytes, and as an integral membrane protein on NK cells and macrophages. Antibody 3G8 recognizes both allelic forms of CD16. Antibody 3G8 blocks binding of complexed IgG to CD16.

References: H.B. Fleit, et al, (1982) Proc Natl Acad Sci USA **79:** 3275-3279. Leukocyte Typing IV (W. Knapp, et al, eds.) Oxford University Press, Oxford, (1989) p. 574-597. G. Trinchieri & N. Valiante, (1993) Natural Immunity **12:** 218-234. Leukocyte Typing V (S.F. Schlossman, et al, eds.) Oxford University Press, Oxford, (1995) p. 805-814. J.C. Edberg & R.P. Kimberly, (1997) J Immunol **159:** 3849-3857.

STORAGE CONDITIONS: Store at 2 - 5°C. Freeze/Thawing is not recommended.

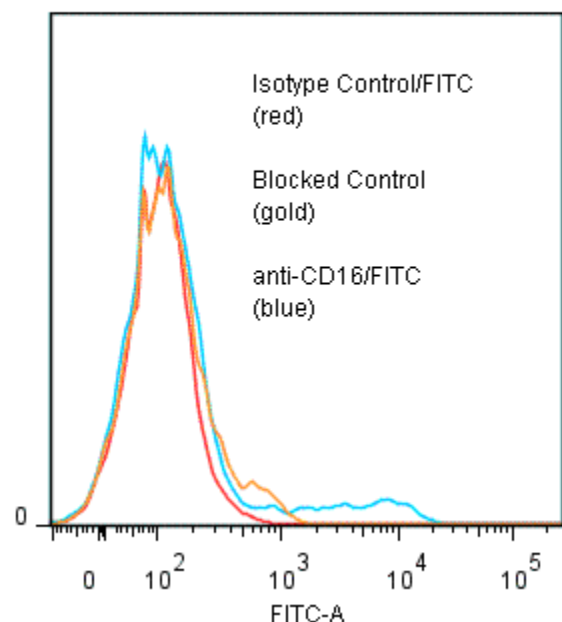
PRODUCT STABILITY: Product should retain activity for at least 12 months after shipping date when stored as recommended. Ship Date: _____

BUFFER: 50 mM Sodium Phosphate pH 7.5, 100 mM Potassium Chloride, 150mM NaCl, 5% Glycerol, 0.2% BSA, 0.04% NaN₃ (as a preservative).

PRODUCTION: Protein A purified antibody from tissue culture supernatant was reacted with FITC. Unconjugated FITC was separated from antibody/FITC conjugate by desalting column. The antibody/FITC conjugate is at **0.5 mg/ml** with a Fluorescein/IgG molar ratio of 4.7.

PERFORMANCE: Five x 10⁵ ficoll prepared human peripheral blood mononuclear cells were washed and incubated 45 minutes on ice with 80 µl anti-CD16/FITC at a **1:50** dilution factor (10 µg/ml). Cells were washed three times, fixed and analyzed by FACS. An **8.7%** sub population of the cells stained positive with a mean shift of **1.68** log₁₀ fluorescent units when compared to a Mouse IgG1 negative control (Catalog # 278-010). Binding was blocked when cells were pre incubated 10 minutes with 20 µl of 0.5 mg/ml anti-CD16 antibody (Catalog #165-020).

Binding of anti-CD16/FITC to human PBMC



* **Research Use Only. Not for use in Diagnostic procedures.**