

PERFORMANCE DATA SHEET
2331

Monoclonal anti-human CD16(FcγRIII)*

mAb name/Clone: 3G8

Isotype: Mouse IgG1

Immunogen: Human polymorphonuclear leukocytes

CATALOG#: 165-020

QUANTITY: 100 µg

CONCENTRATION: 1.0 mg/ml

INFORMATION: Human CD16 is a low affinity receptor for complexed IgG and occurs in two distinct forms, as a glycosyl phosphatidyl inositol (GPI) anchored protein in granulocytes, and as an integral membrane protein on NK cells and macrophages. Antibody 3G8 recognizes both allelic forms of CD16. Antibody 3G8 blocks binding of complexed IgG to CD16.

References: H.B. Fleit, et al, (1982) Proc Natl Acad Sci USA **79**: 3275-3279. Leukocyte Typing IV (W. Knapp, et al, eds.) Oxford University Press, Oxford, (1989) p. 574-597. G. Trinchieri & N. Valiante, (1993) Natural Immunity **12**: 218-234. Leukocyte Typing V (S.F. Schlossman, et al, eds.) Oxford University Press, Oxford, (1995) p. 805-814. J.C. Edberg & R.P. Kimberly, (1997) J Immunol **159**: 3849-3857.

STORAGE CONDITIONS: Store at 2 - 5°C. Freeze/Thawing is not recommended.

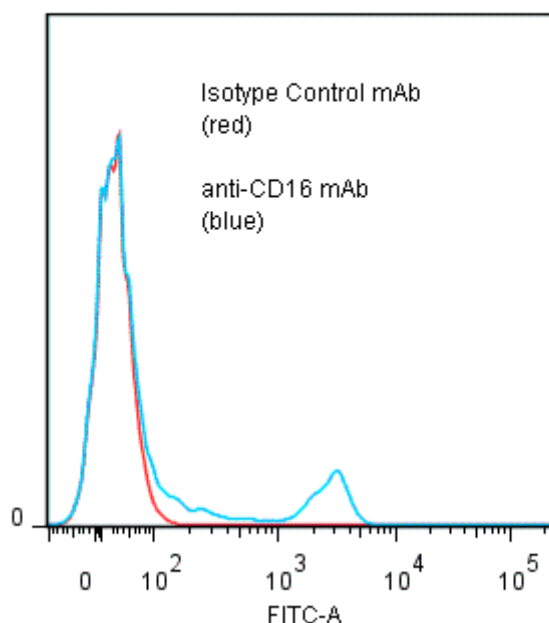
PRODUCT STABILITY: Product should retain activity for at least 12 months after shipping date when stored as recommended. Ship Date: _____

BUFFER: 50 mM Sodium Phosphate pH 7.5, 100 mM Potassium Chloride, 150mM NaCl, 0.5 mg/ml Gentamicin Sulfate (as a preservative).

PRODUCTION: Antibody was Protein A purified from (low FBS containing) tissue culture supernatant. Purity was >95% Immunoglobulin by SDS-PAGE and contains less than 1% Bovine Immunoglobulin.

PERFORMANCE: Five x 10⁵ ficoll prepared human peripheral blood mononuclear cells (PBMC) were incubated 45 minutes on ice with 80 µl of anti-CD16 antibody at 5 µg/ml. Cells were washed twice and incubated with 2^o reagent Goat anti-Mouse IgG/FITC (Catalog #232-011), after which they were washed three times, fixed and analyzed by FACS. A net 11.6% sub population of the cells stained brightly positive with a mean shift of 2.17 log₁₀ fluorescent units when compared to a Mouse IgG1 negative control (Catalog #278-010).

Binding of anti-CD16 mAb +GAM/FITC to human PBMC



**Research use only. Not for use in Diagnostic Procedures.*