

PERFORMANCE DATA SHEET

1536

*Monoclonal anti-human CD15(Lewis^X)**

mAb name/Clone: AHN1.1

Isotype: Mouse IgM

Immunogen: Human neutrophils

CATALOG#: 164-820 (Preservative Free)

QUANTITY: 100 µg

CONCENTRATION: 1.0 mg/ml

INFORMATION: Human CD15 is expressed by neutrophils, eosinophils and monocytes. Antibodies in this cluster recognize a common terminal pentasaccharide found on cell surface glycoproteins and glycolipids. Antibody AHN1.1 reacts with the terminal pentasacchride lacto-N-fucopentaose III known as Lewis^X. Antibody AHN1.1 activates normal monocytes and inhibits neutrophil chemotaxis.

References: Leukocyte Typing IV (W. Knapp, et al, eds.) Oxford University Press, Oxford, (1989) p. 798-810. M.A. Kerr & S.C. Stocks, (1992) Histochem J **24**: 811-826. Leukocyte Typing V (S.F. Schlossman, et al, eds.) Oxford University Press, Oxford, (1995) p. 790-800.

STORAGE CONDITIONS: Store at 2 - 5°C. Open under aseptic conditions. Do not Freeze.

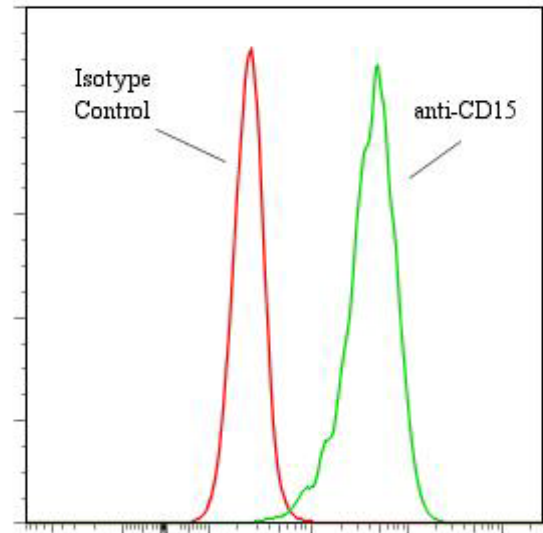
PRODUCT STABILITY: Product should retain activity for at least 12 months after shipping date when stored as recommended. Ship Date: _____

BUFFER: 50 mM Sodium Phosphate pH 7.5, 500 mM Potassium Chloride, 150mM NaCl.

PRODUCTION: Antibody was Protein A purified from (low FBS containing) tissue culture supernatant. Purity was >95% Immunoglobulin by SDS-PAGE and contains less than 1% Bovine Immunoglobulin. Product was 0.2 µm filtered and viald under aseptic conditions.

PERFORMANCE: Five x 10⁵ cultured U-937 human tumor cells were incubated 45 minutes on ice with 80 µl of anti-CD15 antibody at 5 µg/ml. Cells were washed twice and incubated with 2^o reagent reagent Goat anti-Mouse IgG/FITC (Catalog #232-011), after which they were washed three times, fixed and analyzed by FACS. Cells stained positive with a mean shift of 1.47 log₁₀ fluorescent units when compared to a Mouse IgM negative control (Catalog #290-010) at a similar concentration.

Binding of anti-CD15 Ab + GAM/FITC to human U-937 cells



**This Product is intended for Laboratory Research use only.*