

PERFORMANCE DATA SHEET

2446



Monoclonal anti-human CD15(Lewis^X)/FITC*

mAb name/Clone: AHN1.1

Isotype: Mouse IgM

Immunogen: Human neutrophils

CATALOG#: 164-040

QUANTITY: 120 tests

VOLUME IN VIAL: 0.2 ml

WORKING DILUTION: 1:50 (or use 1.6µl of concentrated stock per 5 x 10⁵-cell test)

INFORMATION: Human CD15 is expressed by neutrophils, eosinophils and monocytes. Antibodies in this cluster recognize a common terminal pentasaccharide found on cell surface glycoproteins and glycolipids. Antibody AHN1.1 reacts with the terminal pentasacchride lacto-N-fucopentaose III known as Lewis^X. Antibody AHN1.1 activates normal monocytes and inhibits neutophil chemotaxis.

References: Leukocyte Typing IV (W. Knapp, et al, eds.) Oxford University Press, Oxford, (1989) p. 798-810. M.A. Kerr & S.C. Stocks, (1992) Histochem J **24**: 811-826. Leukocyte Typing V (S.F. Schlossman, et al, eds.) Oxford University Press, Oxford, (1995) p. 790-800.

STORAGE CONDITIONS: Store at 2 - 5°C. Do not Freeze! Protect from light.

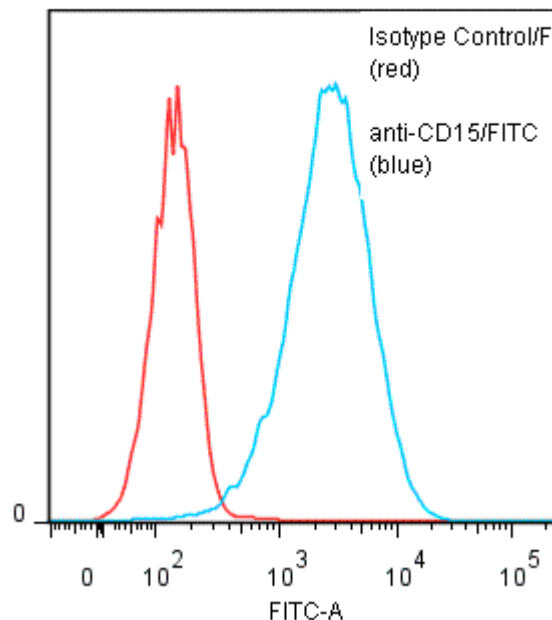
PRODUCT STABILITY: Product should retain activity for at least 12 months after shipping date when stored as recommended. Ship Date: _____

BUFFER: 50 mM Sodium Phosphate pH 7.5, 500 mM Potassium Chloride, 150mM NaCl, 5% Glycerol, 0.2% BSA, 0.04% NaN₃ (as a preservative).

PRODUCTION: Antibody from (low FBS containing) tissue culture supernatant was size exclusion purified to 95% Immunoglobulin by SDS-PAGE, and reacted with FITC. Unconjugated FITC was separated from antibody/FITC conjugate by desalting column. The antibody/FITC conjugate is at **0.5 mg/ml** with a Fluorescein/IgM molar ratio of 37.3.

PERFORMANCE: Five x 10⁵ cultured U-937 human tumor cells were washed and and pre incubated 5 minutes with 20µl of 250 µg/ml human IgG (to block non specific binding) after which they were incubated 45 minutes on ice with 80 µl of anti-CD15/FITC at a 1:50 dilution (10µg/ml). Cells were then washed three times, fixed and analyzed by FACS. Cells stained positive with a mean shift of 1.32 log₁₀ fluorescent units when compared to a Mouse IgM/FITC negative control (Catalog #290-040) at a similar concentration. Binding was blocked when cells were pre incubated 10 minutes with 20 µl of 0.5 mg/ml anti-CD15 antibody (Catalog #164-020).

Binding of anti-CD15/FITC to human U-937 cells



* *Research Use Only. Not for use in Diagnostic procedures.*

Ansell Corporation P.O. Box 87 Bayport, MN 55003-0087 USA
Phone: Toll free 800-374-9523 or 651-439-0835 Fax: 651-439-1940