

**PERFORMANCE DATA SHEET**

2850

**Monoclonal anti-human CD14\***

**mAb name/Clone:** UCHM1

**Isotype:** Mouse IgG2a

**Immunogen:** Human thymocytes/Sezary T cells

**CATALOG#:** 163-020

**QUANTITY:** 100 µg

**CONCENTRATION:** 1.0 mg/ml

**INFORMATION:** Human CD14 is strongly expressed on myelomonocyte lineage cells including monocytes, macrophages, and a subset of granulocytes. CD14 is a high affinity receptor for complexes of lipopolysaccharide and lipopolysaccharide binding protein. A soluble form of CD14 also binds to LPS and LBP. Antibody UCHM1 recognizes a membrane bound CD14 molecule of about 53 kd, and blocks LPS induced TNF. UCHM1 will also immunoprecipitate a soluble form of CD14.

**References:** 1) N. Hogg, et al, (1984) Immunology **53**: 753-767. 2) M.O. Labeta, et al, (1993) Eur J Immunol **23**: 2144-2151. 3) Leukocyte Typing IV (W. Knapp, et al, eds.) Oxford University Press, Oxford, (1989) "Reference Antibody". 4) Leukocyte Typing V (S.F. Schlossman, et al, eds.) Oxford University Press, Oxford, (1995) p. 778-788. 5) S.D. Wright, (1995) J Immunol **155**: 6-8.

**STORAGE CONDITIONS:** Store at 2 - 5°C. Freeze/Thawing is not recommended.

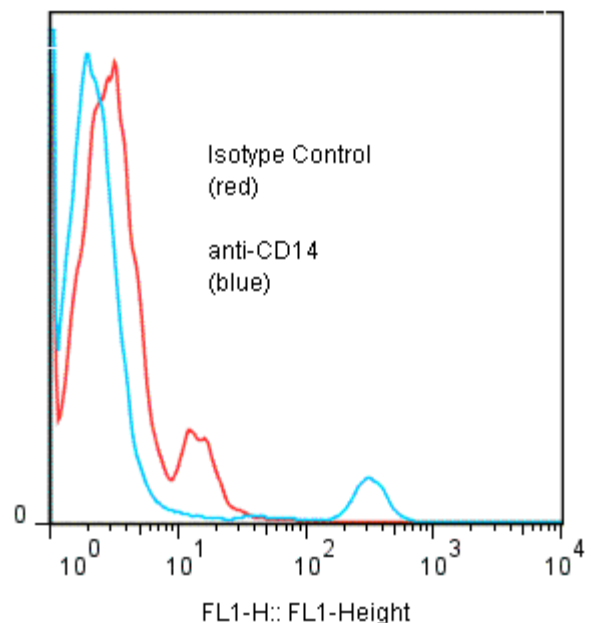
**PRODUCT STABILITY:** Product should retain activity for at least 12 months after shipping date when stored as recommended. Ship Date: \_\_\_\_\_

**BUFFER:** 50 mM Sodium Phosphate pH 7.5, 100 mM Potassium Chloride, 150mM NaCl, 0.5 mg/ml Gentamicin Sulfate (as a preservative).

**PRODUCTION:** Antibody was Protein A purified from (low FBS containing) tissue culture supernatant. Purity was >95% Immunoglobulin by SDS-PAGE with less than 1% Bovine Immunoglobulin.

**PERFORMANCE:** Five x 10<sup>5</sup> ficoll prepared human peripheral blood mononuclear cells were washed and pre incubated 5 minutes with 20µl human IgG at 250 µg/ml (to block non specific binding) after which they were incubated 45 minutes on ice with 80 µl of anti-CD14 antibody at 10 µg/ml. Cells were washed twice and incubated with 2<sup>o</sup> reagent Goat anti-Mouse IgG/FITC (Catalog #232-011), after which they were washed three times, fixed and analyzed by FACS. A net 4.8% sub population of the cells stained positive with a mean shift of 1.6 log<sub>10</sub> fluorescent units when compared to a Mouse IgG2a negative control (Catalog #281-010).

**Binding of anti-CD14 mAb +GAM/FITC to human PBMC**



\* Research Use Only. Not for use in Diagnostic procedures.