

## PERFORMANCE DATA SHEET

2239

# Monoclonal anti-human CD11c/APC\*

**mAb name/Clone:** 3.9

**Isotype:** Mouse IgG1

**Immunogen:** Human rheumatoid synovial fluid cells/monocytes

**CATALOG#:** 160-060

**QUANTITY:** 120 tests

**VOLUME IN VIAL:** 0.2 ml

**WORKING DILUTION:** 1:50 (or use 1.6µl of concentrated stock per 5 x 10<sup>5</sup>-cell test)

**INFORMATION:** Human CD11c (α<sup>X</sup> integrin) complexes with CD18 (β<sub>2</sub> integrin) to form the complement receptor type 4 (CR4) heterodimer which binds to fibrinogen and is involved with monocyte/granulocyte adhesion during inflammatory responses. CD11c expression is restricted to leukocytes mainly of myeloid lineage with highest expression on macrophages. Antibody 3.9 recognizes the integrin alpha X subunit (CD11c) of about 150 kd.

**References:** N. Hogg, et al, (1986) Eur J Immunol **16**: 240-248. S.A. Stacker & T.A. Springer, (1991) J Immunol **146**: 648-655. M. Patarroyo, (1994) Immunobiology **191**: 474-477. Leukocyte Typing V (1995) (S.F. Schlossman, et al., eds.) Oxford University Press, Oxford, p. 1590-1592.

**STORAGE CONDITIONS:** Store at 2 - 5°C. Do not freeze! Protect from light.

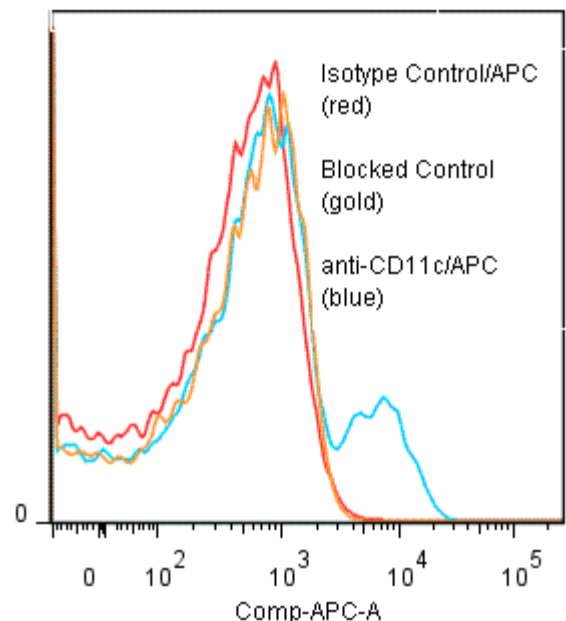
**PRODUCT STABILITY:** Product should retain activity for at least 12 months after shipping date when stored as recommended. Ship Date: \_\_\_\_\_

**BUFFER:** 50 mM Sodium Phosphate pH 7.5, 500 mM Potassium Chloride, 150mM NaCl, 15% Glycerol, 0.2% BSA, 0.04% NaN<sub>3</sub> (as a preservative).

**PRODUCTION:** Antibody from (low FBS containing) tissue culture supernatant was Protein A purified to 95% Immunoglobulin by SDS-PAGE, and conjugated to Allophycocyanin through a sulfo-ester linkage. Unconjugated antibody was removed using size exclusion chromatography. Antibody conjugate is at 0.5 mg/ml with an A<sub>650</sub>/A<sub>280</sub> ratio of 1.94.

**PERFORMANCE:** Five x 10<sup>5</sup> ficoll prepared human PBMC were washed and pre incubated 10 minutes with 20 µl human IgG at 250 µg/ml (to block non specific binding) after which they were incubated 45 minutes on ice with 80 µl of anti-CD11c/APC at a 1:50 dilution (10µg/ml). Cells were washed three times, fixed and analyzed by FACS. An 11% sub population of the cells stained positive with a mean shift of 1.28 log<sub>10</sub> fluorescent units when compared to a Mouse IgG1/APC negative control (Catalog #278-060) at a similar concentration. Binding was blocked when cells were pre incubated 10 minutes with 20 µl of 0.5 mg/ml anti-CD11c antibody (Catalog #160-020).

**Binding of anti-CD11c/APC to human PBMC**



\* **Research Use Only. Not for use in Diagnostic procedures.**