

PERFORMANCE DATA SHEET

1816

Monoclonal anti-human CD11c/R-PE*

mAb name/Clone: 3.9

Isotype: Mouse IgG1

Immunogen: Human rheumatoid synovial fluid cells/monocytes

CATALOG#: 160-050

QUANTITY: 120 tests

VOLUME IN VIAL: 0.2 ml

WORKING DILUTION: 1:50 (or use 1.6µl of concentrated stock per 5 x 10⁵-cell test)

INFORMATION: Human CD11c (α^X integrin) complexes with CD18 (β2 integrin) to form the complement receptor type 4 (CR4) heterodimer which binds to fibrinogen and is involved with monocyte/granulocyte adhesion during inflammatory responses. CD11c expression is restricted to leukocytes mainly of myeloid lineage with highest expression on macrophages. Antibody 3.9 recognizes the integrin alpha X subunit (CD11c) of about 150 kd.

References: N. Hogg, et al, (1986) Eur J Immunol **16**: 240-248. S.A. Stacker & T.A. Springer, (1991) J Immunol **146**: 648-655. M. Patarroyo, (1994) Immunobiology **191**: 474-477. Leukocyte Typing V (1995) (S.F. Schlossman, et al., eds.) Oxford University Press, Oxford, p. 1590-1592.

STORAGE CONDITIONS: Store at 2 - 5°C. Do not freeze! Protect from light.

PRODUCT STABILITY: Product should retain activity for at least 12 months after shipping date when stored as recommended. Ship Date: _____

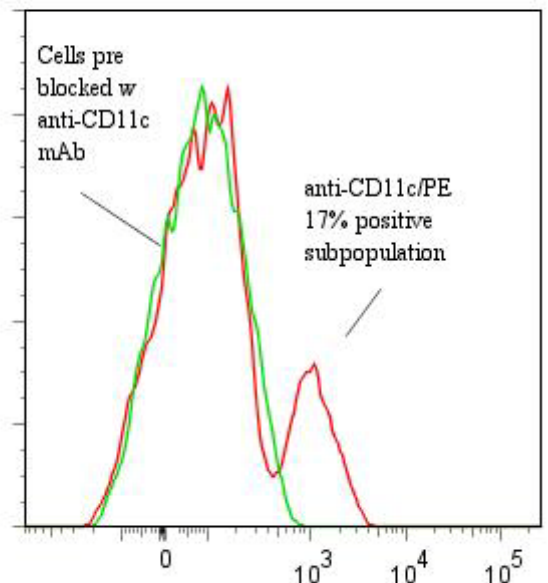
BUFFER: 50 mM Sodium Phosphate pH 7.5, 500 mM Potassium Chloride, 150mM NaCl, 15% Glycerol, 0.2% BSA, 0.04% NaN₃ (as a preservative).

PRODUCTION: Protein A purified antibody from tissue culture supernatant was conjugated to R-Phycoerythrin through a sulfo-ester linkage. Unconjugated antibody was removed using size exclusion chromatography. Antibody conjugate is at approximately **1.0 mg/ml**.

PERFORMANCE: Five x 10⁵ ficoll prepared human peripheral blood mononuclear cells were washed and pre incubated 10 minutes with 20 µl human IgG at 250 µg/ml (to block non specific binding) after which they were incubated 45 minutes on ice with 80 µl of anti-CD11c/R-PE at a **1:50** dilution (20µg/ml). Cells were washed three times, fixed and analyzed by FACS. A net **17%** subset of the cells (from a myeloid + lymph gate) stained positive with a mean shift of **1.1 log₁₀** fluorescent units when compared to a Mouse IgG1/R-PE negative control (Catalog #278-050) at a similar concentration. Binding was blocked when cells were pre incubated 10 minutes with 20 µl of 0.5 mg/ml anti-CD11c antibody (Catalog #160-020).

**This Product is intended for Laboratory Research use only.*
R-Phycoerythrin (R-PE) is covered under patents: U.S. 4,520,110; European 76,695 and Canadian 1,179,942.

Binding of anti-CD11c/R-PE to human PBMC



Ancell Corporation P.O. Box 87 243 Third Street North Bayport, MN 55003-0087 USA
Phone: Toll free 800-374-9523 or 651-439-0835 Fax: 651-439-1940