

PERFORMANCE DATA SHEET

2735

Monoclonal anti-human CD11c/FITC*

mAb name/Clone: 3.9

Isotype: Mouse IgG1

Immunogen: Human rheumatoid synovial fluid cells/monocytes

CATALOG#: 160-040

QUANTITY: 120 tests

VOLUME IN VIAL: 0.2ml

WORKING DILUTION: 1:50 (or use 1.6µl of concentrated stock per 5 x 10⁵-cell test)

INFORMATION: Human CD11c (α^X integrin) complexes with CD18 (β₂ integrin) to form the complement receptor type 4 (CR4) heterodimer which binds to fibrinogen and is involved with monocyte/granulocyte adhesion during inflammatory responses. CD11c expression is restricted to leukocytes mainly of myeloid lineage with highest expression on macrophages. Antibody 3.9 recognizes the integrin alpha X subunit (CD11c) of about 150 kd.

References: N. Hogg, et al, (1986) Eur J Immunol **16**: 240-248. S.A. Stacker & T.A. Springer, (1991) J Immunol **146**: 648-655. M. Patarroyo, (1994) Immunobiology **191**: 474-477. Leukocyte Typing V (1995) (S.F. Schlossman, et al., eds.) Oxford University Press, Oxford, p. 1590-1592.

STORAGE CONDITIONS: Store at 2 - 5°C. Freeze/Thawing is not recommended. Protect from light.

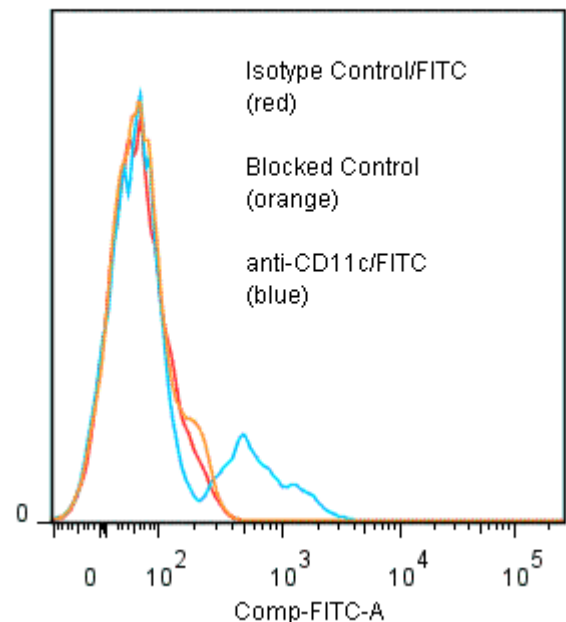
PRODUCT STABILITY: Product should retain activity for at least 12 months after shipping date when stored as recommended. Ship Date: _____

BUFFER: 50 mM Sodium Phosphate pH 7.5, 100 mM Potassium Chloride, 150mM NaCl, 5% Glycerol, 0.2% BSA, 0.04% NaN₃ (as a preservative).

PRODUCTION: Protein A purified antibody from tissue culture supernatant was reacted with FITC. Unconjugated FITC was separated from antibody/FITC conjugate by desalting column. The antibody/FITC conjugate is at 0.5 mg/ml with a Fluorescein/IgG molar ratio of 5.9.

PERFORMANCE: Five x 10⁵ ficoll prepared human peripheral blood mononuclear cells were washed and pre incubated 5 minutes with 20µl of 250µg/ml human IgG (to block non specific binding) after which they were incubated 45 minutes on ice with 80 µl of anti-CD11c/FITC at a 1:50 dilution (10 µg/ml). Cells were washed three times, fixed and analyzed by FACS. A net 20% sub population of the cells stained positive with a mean shift of 1.1 log₁₀ fluorescent units when compared to a Mouse IgG1/FITC negative control (Catalog # 278-040) at a similar concentration. Binding was blocked when cells were pre incubated 10 minutes with 20 µl of 0.5 mg/ml anti-CD11c antibody (Catalog #160-020).

Binding of anti-CD11c/FITC to human PBMC



*For Research Use Only. Not For Use In Diagnostic Procedures.