

PERFORMANCE DATA SHEET

1745

*Monoclonal anti-human CD11b (CR3, Mac-1, integrin α^M)**

mAb name/Clone: ICRF44

Isotype: Mouse IgG1

Immunogen: Human Monocytes

CATALOG#: 159-020

QUANTITY: 100 μ g

CONCENTRATION: 1.0 mg/ml

INFORMATION: Human CD11b (α^M integrin) complexes with CD18 (β_2 integrin) to form the complement receptor type 3 (CR3) heterodimer which binds to ICAM-1, fibrinogen, C3b, and coagulation factor X. CD11b expression is restricted to leukocytes, mainly to myeloid and NK cells. Antibody ICRF44 recognizes the integrin alpha M subunit CD11b of about 165 kd. Antibody ICRF44 blocks homotypic neutrophil and monocyte (FMLP induced) aggregation.

References: V. Mathotra, et al, (1986) Eur J Immunol **16**: 1117-1123. B.L. Myones, et al, (1988) J Clin Invest **82**: 640-651. Leukocyte Typing IV (W. Knapp, et al, eds.) Oxford University Press, Oxford, (1989) p. 555-558, 560-562. H.R. Petty & R.F. Todd, (1993) J Leuk Biol **54**: 492-494. Leukocyte Typing V (S. F. Schlossman, et al, eds.) Oxford University Press, Oxford, (1995) p. 1588-1590.

STORAGE CONDITIONS: *Store at 2 - 5°C.* Freeze/Thawing is not recommended.

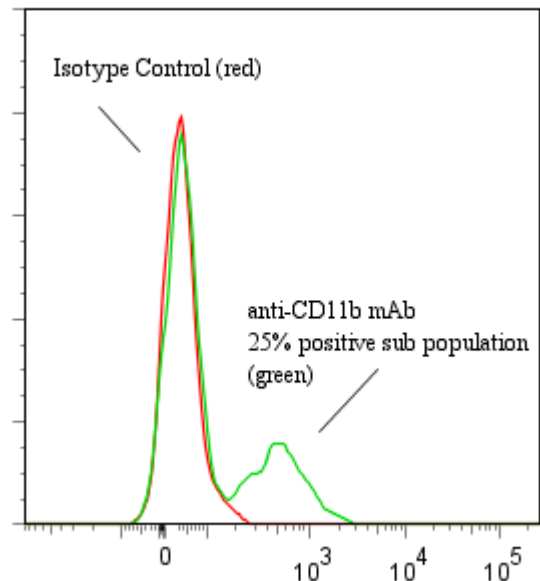
PRODUCT STABILITY: Product should retain activity for at least 12 months after shipping date when stored as recommended. Ship Date: _____

BUFFER: 50 mM Sodium Phosphate pH 7.5, 100 mM Potassium Chloride, 150mM NaCl, 0.5 mg/ml Gentamicin Sulfate (as a preservative).

PRODUCTION: Antibody was Protein A purified from (low FBS containing) tissue culture supernatant. Purity was >95% Immunoglobulin by SDS-PAGE and contains less than 1% Bovine Immunoglobulin.

PERFORMANCE: Five x 10⁵ ficoll prepared **human peripheral blood mononuclear cells** were washed and preincubated with 20 μ l of 300 μ g/ml human IgG (to block non specific binding) after which they were incubated 45 minutes on ice with 80 μ l of anti-CD11b antibody at a concentration of **10 μ g/ml**. Cells were washed twice and incubated with 2^o reagent Goat anti-Mouse IgG/FITC (Catalog #232-011), after which they were washed three times, fixed and analyzed by FACS. A **25%** sub population of the cells stained positive with a mean shift of **1.22 log₁₀** fluorescent units when compared to a Mouse IgG1 negative control (Catalog # 278-010) at a similar concentration.

Binding of anti-CD11b mAb + GAM/FITC to human PBMC



**This Product is intended for Laboratory Research use only.*

Ancell Corporation P.O. Box 87 243 Third Street North Bayport, MN 55003-0087 USA
Phone: Toll free 800-374-9523 or 651-439-0835 Fax: 651-439-1940