

PERFORMANCE DATA SHEET

2507

Monoclonal anti-human CD10(CALLA)/R-PE *

mAb Name/Clone: SN5c/L4-1A1

Isotype: Mouse IgG1κ

Immunogen: Membrane preparation of human B-lineage leukemia cells

CATALOG#: 157-050

QUANTITY: 120 tests

VOLUME IN VIAL: 0.2 ml

WORKING DILUTION: 1:50 (or use 1.6µl of concentrated stock per 5 x 10⁵-cell test)

INFORMATION: Human CD10 is a well known marker for common acute lymphoblastic leukemia antigen (CALLA). CD10 is expressed on normal early B cells in bone marrow and is also on fetal thymocytes. CD10 expression is lost as the T and B lineage cells mature and only appears again on activated germinal center B cells. CD10 is present on neutrophils. CD10 is a neutral endopeptidase and hydrolyzes peptide bonds on the amino side of hydrophobic amino acids. Antibody SN5c recognizes the 100 kd membrane-associated peptidase CD10.

References: H. Matsuzaki, et al, (1987) Cancer Research **47**: 2160-2166. W.C. Biddle, et al, (1989) Leukemia Research **13**: 699-707. H. Hara, et al, (1988) Cancer Research **48**: 4673-4680. Leukocyte Typing V (S.F. Schlossman, et al, eds.) Oxford University Press, Oxford, (1995) p. 505-507.

STORAGE CONDITIONS: Store at 2 - 5°C. Do not freeze! Protect from light.

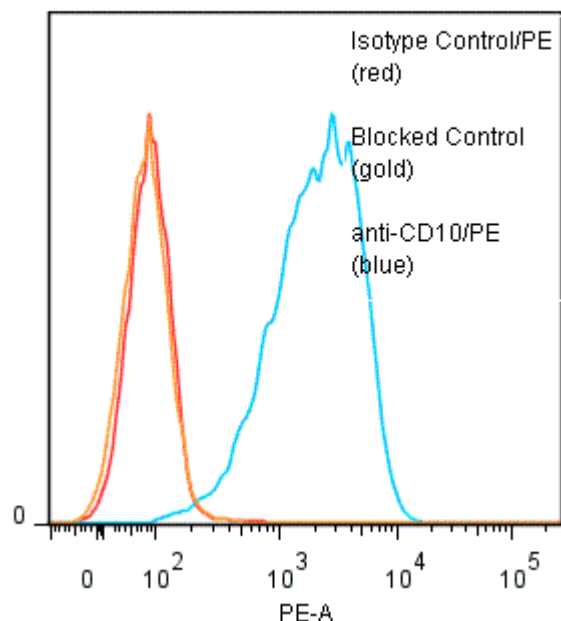
PRODUCT STABILITY: Product should retain activity for at least 12 months after shipping date when stored as recommended. Ship Date: _____

BUFFER: 50 mM Sodium Phosphate pH 7.5, 500 mM Potassium Chloride, 150mM NaCl, 15% Glycerol, 0.2% BSA, 0.04% NaN₃ (as a preservative).

PRODUCTION: Antibody was Protein A purified from (low FBS containing) tissue culture supernatant, and conjugated to R-Phycoerythrin through a sulfo-ester linkage. Unconjugated antibody was removed using size exclusion chromatography. Antibody conjugate is at **0.5 mg/ml**.

PERFORMANCE: Five x 10⁵ cultured **Raji** cells were washed and incubated 45 minutes on ice with 80 µl of anti-CD10/R-PE at a dilution factor of **1:50** (10µg/ml). Cells were washed three times, fixed and analyzed by FACS. Cells stained positive with a mean shift of **1.45** log₁₀ fluorescent units when compared to a Mouse IgG1/PE negative control (Catalog # 278-050) at a similar concentration. Binding was blocked when cells were pre incubated 10 minutes with 20 µl of 0.5 mg/ml anti-CD10 antibody (Catalog #157-020).

Binding of anti-CD10/PE to human Raji cells



* *Research Use Only. Not for use in Diagnostic procedures.*