

# PERFORMANCE DATA SHEET

1547

## Monoclonal anti-human CD9/R-PE \*

**mAb Name:** SN4      **Clone:** C3-3A2

**Isotype:** Mouse IgG1 $\kappa$

**Immunogen:** Membrane antigen preparation of NALM-6 (human pre-B leukemia cells)

**CATALOG#:** 156-050

**QUANTITY:** 120 tests

**VOLUME IN VIAL:** 200  $\mu$ l

**WORKING DILUTION:** 1:50 (or use 1.6 $\mu$ l of concentrated stock per 5 x 10<sup>5</sup>-cell test)

**INFORMATION:** Human CD9 is strongly expressed on platelets, on early B cells and on activated T cells. CD9 is a member of the tetraspan family crossing the membrane four times. Both the N-terminal and C-terminal regions are on the cytoplasmic side of the plasma membrane. Recent studies indicate CD9 may be involved with calcium mobilization. Antibody SN4 recognizes the human tetraspan CD9 molecule of about 24 kd.

**References:** Y. Luo, et al, (1989) Cancer Research **49**: 706-710. F. Lanza, et al, (1991) J Biol Chem **266**: 10638-10645. K. Kuroda, et al, (1995) J Immunol **155**: 4427-4436.

**STORAGE CONDITIONS:** Store at 2 - 5°C. Do not freeze! Protect from light.

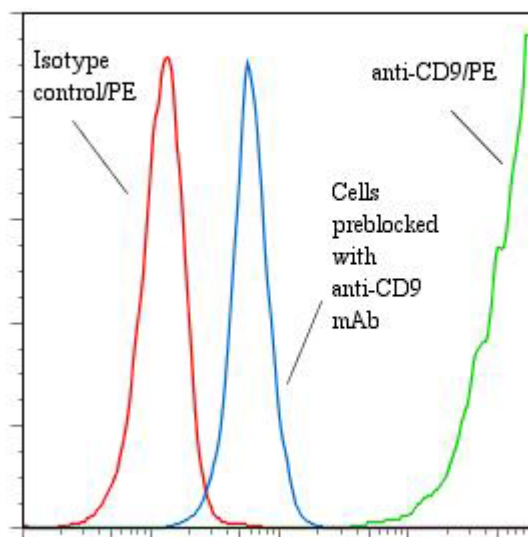
**PRODUCT STABILITY:** Product should retain activity for at least 12 months after shipping date when stored as recommended. Ship Date:\_\_\_\_\_

**BUFFER:** 50 mM Sodium Phosphate pH 7.5, 500 mM Potassium Chloride, 150mM NaCl, 15% Glycerol, 0.2% BSA, 0.04% NaN<sub>3</sub> (as a preservative).

**PRODUCTION:** Antibody was Protein A purified from (low FBS containing) tissue culture supernatant, and conjugated to R-Phycoerythrin through a sulfo-ester linkage. Unconjugated antibody was removed using size exclusion chromatography. Antibody conjugate is at **0.5 mg/ml** with an A<sub>565</sub>/A<sub>280</sub> ratio of 3.16.

**PERFORMANCE:** Five x 10<sup>5</sup> cultured Nalm-6 human tumor cells were washed and incubated 45 minutes on ice with 80  $\mu$ l of anti-CD9/R-PE at a 1:50 dilution (10 $\mu$ g/ml). Cells were washed three times, fixed and analyzed by FACS. Cells stained positive with a mean shift of 2.64 log<sub>10</sub> fluorescent units when compared to a Mouse IgG1/PE negative control (Catalog #278-050). Binding was blocked when pre incubated 10 minutes with 20  $\mu$ l of 0.5 mg/ml anti-CD9 antibody (Catalog #156-020).

**Binding of anti-CD9/PE to human Nalm-6 cells**



\* *Research Use Only. Not for use in Diagnostic procedures..*