

**PERFORMANCE DATA SHEET**  
2025

**Monoclonal anti-human CD9/FITC\***

**mAb/Clone Name:** SN4/C3-3A2

**Isotype:** Mouse IgG1 $\kappa$

**Immunogen:** Membrane antigen preparation of NALM-6 (human pre-B leukemia cells)

**CATALOG#:** 156-040

**QUANTITY:** 120 tests

**VOLUME IN VIAL:** 0.2 ml

**WORKING DILUTION:** 1:50 (or use 1.6 $\mu$ l of concentrated stock per 5 x 10<sup>5</sup>-cell test)

**STORAGE CONDITIONS:** Store at 2 - 5<sup>o</sup>C. Freeze/Thawing is not recommended. Protect from light.

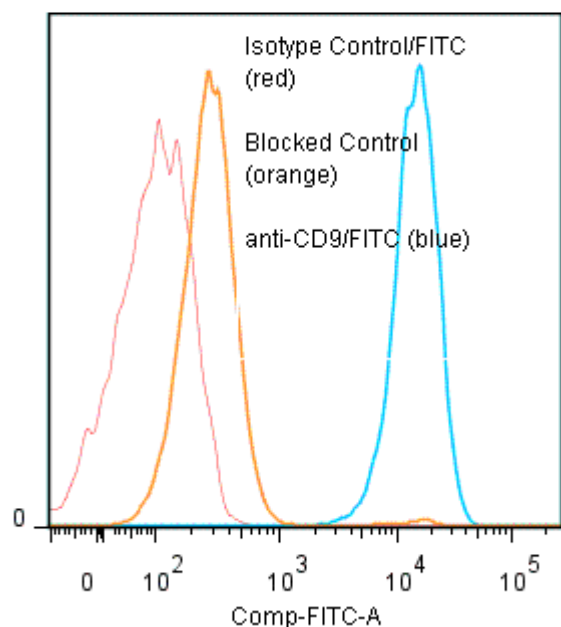
**PRODUCT STABILITY:** Product should retain activity for at least 12 months after shipping date when stored as recommended. Ship Date: \_\_\_\_\_

**BUFFER:** 50 mM Sodium Phosphate pH 7.5, 100 mM Potassium Chloride, 150mM NaCl, 5% Glycerol, 0.2% BSA, 0.04% NaN<sub>3</sub> (as a preservative).

**PRODUCTION:** Antibody from (low FBS containing) tissue culture supernatant was Protein A purified to 95% Immunoglobulin by SDS-PAGE, and reacted with FITC. Unconjugated FITC was removed from conjugate using a desalting column. Antibody conjugate is at **0.25 mg/ml** with a Fluorescein/IgG molar ratio of 7.2.

**PERFORMANCE:** Five x 10<sup>5</sup> cultured **Nalm-6** cells were washed and incubated 45 minutes on ice with 80  $\mu$ l of product at a **1:50** dilution (5  $\mu$ g/ml). Cells were then washed three times, fixed and analyzed by FACS. Cells stained positive with a mean shift of **2.17 log<sub>10</sub>** fluorescent units when compared to a Mouse IgG1/FITC negative control (Catalog #278-040). Binding was blocked when pre incubated 10 minutes with 20  $\mu$ l of 0.5 mg/ml anti-CD9 antibody (Catalog #156-020).

**Binding of anti-CD9/FITC to human Nalm-6 cells**



*\*Research use only. Not for use in Diagnostic procedures.*