

**PERFORMANCE DATA SHEET**

1004

**Monoclonal anti-human CD8\*****Clone:** 14**Isotype:** Mouse IgG1**Immunogen:** Human thymocytes**CATALOG#:** 154-820 (Preservative Free)**QUANTITY:** 100 µg**CONCENTRATION:** 1.0 mg/ml

**INFORMATION:** Human CD8 is a heterodimeric protein consisting of an  $\alpha$  and  $\beta$  chain, each about 33 kd. CD8 is expressed on most thymocytes and on about one third of peripheral blood T cells. CD8 is a co-receptor involved in antigen recognition and binds to the  $\alpha 2$  and  $\alpha 3$  domain of MHC Class I molecules. Antibody 14 recognizes a CD8  $\beta$  chain of approximately 33 kd.

**References:** Leukocyte Typing II (E.L. Reinherz, et al, eds.) Springer Verlag, New York, (1986). R. Zamoyska, (1994) *Immunity* **1**: 243-246. Leukocyte Typing V (S.F. Schlossman, et al, eds.) Oxford University Press, Oxford, (1995) p. 353-356. J. Sun, et al, (1995) *J Exp Med* **182**: 1275-1280.

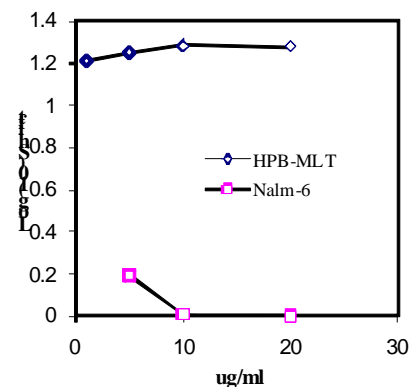
**STORAGE CONDITIONS:** Store at 2 - 5°C. Open under aseptic conditions. Freeze/Thawing is not recommended.

**PRODUCT STABILITY:** Product should retain activity for at least 12 months after shipping date when stored as recommended. Ship Date: \_\_\_\_\_

**BUFFER:** 50 mM Sodium Phosphate pH 7.5, 100 mM Potassium Chloride, 150mM NaCl.

**PRODUCTION:** Antibody was Protein A purified from (low FBS containing) tissue culture supernatant. Purity was >95% Immunoglobulin by SDS-PAGE and contains less than 1% Bovine Immunoglobulin. Product was 0.2 µm filtered and vialled under aseptic conditions.

**PERFORMANCE:** Five x 10<sup>5</sup> cultured **HPB-MLT** cells per tube were washed and incubated 45 minutes on ice with 80 µl of anti-CD8 antibody at **5 µg/ml**. Cells were washed twice and incubated with 2<sup>o</sup> reagent Goat anti-Mouse IgG/FITC (Catalog #232-011), after which they were washed three times, fixed and analyzed by FACS. Cells stained positive with a mean shift of **1.28** log<sub>10</sub> fluorescent units when compared to a Mouse IgG1 negative control (Catalog # 278-010).

**Binding of anti-CD8 antibody to human cell lines**

\* *Research use only. Not for use in Diagnostic procedures.*