

**PERFORMANCE DATA SHEET**

2321

**Monoclonal anti-human CD6/R-PE\***

**mAb name/Clone:** 3F7B5 (UMCD6)

**Isotype:** Mouse IgG1κ

**Immunogen:** Human rheumatoid synovial T cell line (ST-1)

**CATALOG#:** 151-050

**QUANTITY:** 120 tests

**VOLUME IN VIAL:** 0.2 ml

**WORKING DILUTION:** 1:50 (or use 1.6µl of concentrated stock per 5 x 10<sup>5</sup>-cell test)

**INFORMATION:** Human CD6 is expressed on peripheral blood T cells, most thymocytes and a subset of B cells. CD6 is similar to CD5 and contains three cysteine-rich domains with structural homology to the macrophage scavenger receptor. CD6 is involved in T cell activation and its ligand was recently identified. Antibody UMCD6 recognizes CD6 molecules of approximately 130 kd. Antibody UMCD6 is a useful reagent to study T cell activation through CD6.

**References:** C.M. Bott, et al, (1993) Int Immunol **5**: 783-792. M.A. Bowen, et al, (1995) J Exp Med **181**: 2213-2220. Leukocyte Typing V (S.F. Schlossman, et al, eds.) Oxford University Press, Oxford, (1995) p. 419-422. G.S. Whitney, et al, (1995) J Biol Chem **270**: 18187-18190.

**STORAGE CONDITIONS:** Store at 2 - 5°C. Do not freeze! Protect from light.

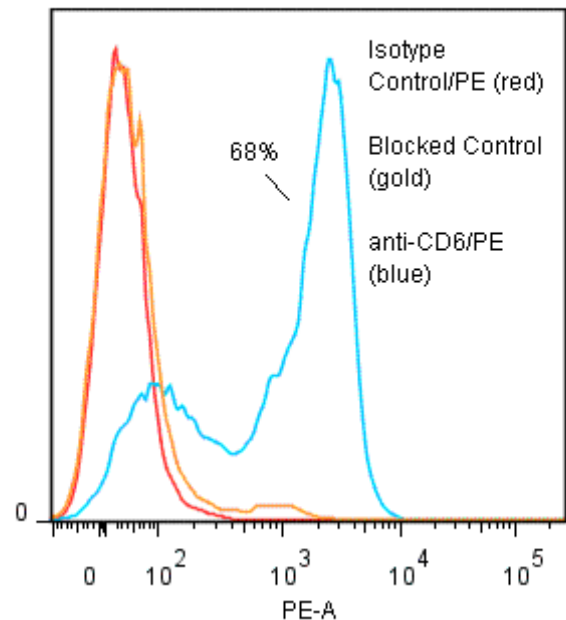
**PRODUCT STABILITY:** Product should retain activity for at least 12 months after shipping date when stored as recommended. Ship Date: \_\_\_\_\_

**BUFFER:** 50 mM Sodium Phosphate pH 7.5, 500 mM Potassium Chloride, 150mM NaCl, 15% Glycerol, 0.2% BSA, 0.04% NaN<sub>3</sub> (as a preservative).

**PRODUCTION:** Protein A purified antibody from tissue culture supernatant was conjugated to R-Phycoerythrin through a sulfo-ester linkage. Unconjugated antibody was removed using size exclusion chromatography. Antibody conjugate is at approximately **0.5 mg/ml** with an A<sub>565</sub>/A<sub>280</sub> ratio of 3.02.

**PERFORMANCE:** Five x 10<sup>5</sup> ficoll prepared human PBL per tube were pre incubated ~10 minutes with 20 µl of 300 µg/ml human IgG (to reduce non specific binding) after which they were incubated 45 minutes on ice with 80 µl of anti-CD6/PE at a dilution factor of **1:50** (10 µg/ml). Cells were washed three times, fixed and analyzed by FACS using a lymphoid gate. A **68%** sub population of the cells stained positive with a mean shift of **1.88** log<sub>10</sub> fluorescent units when compared to a Mouse IgG1/R-PE negative control (Catalog #278-050). Binding was blocked when cells were pre incubated 10 minutes with 20 µl of 0.5 mg/ml anti-CD6 antibody (Catalog #151-020).

**Binding of anti-CD6/PE to human PBL**



\* **Research Use Only. Not for use in Diagnostic procedures.**