

PERFORMANCE DATA SHEET

2331

Monoclonal anti-human CD6/FITC*

mAb name/Clone: 3F7B5 (UMCD6)

Isotype: Mouse IgG1κ

Immunogen: Human rheumatoid synovial T cell line (ST-1)

CATALOG#: 151-040

QUANTITY: 120 tests

VOLUME IN VIAL: 0.2ml

WORKING DILUTION: 1:50 (or use 1.6ul of concentrated stock per 5 x 10⁵-cell test)

INFORMATION: Human CD6 is expressed on peripheral blood T cells, most thymocytes and a subset of B cells. CD6 is similar to CD5 and contains three cysteine-rich domains with structural homology to the macrophage scavenger receptor. CD6 is involved in T cell activation and its ligand was recently identified. Antibody UMCD6 recognizes CD6 molecules of approximately 130 kd. Antibody UMCD6 is a useful reagent to study T cell activation through CD6.

References: C.M. Bott, et al, (1993) Int Immunol **5**: 783-792. M.A. Bowen, et al, (1995) J Exp Med **181**: 2213-2220. Leukocyte Typing V (S.F. Schlossman, et al, eds.) Oxford University Press, Oxford, (1995) p. 419-422. G.S. Whitney, et al, (1995) J Biol Chem **270**: 18187-18190.

STORAGE CONDITIONS: Store at 2 - 5°C. Freeze/Thawing is not recommended. Protect from light.

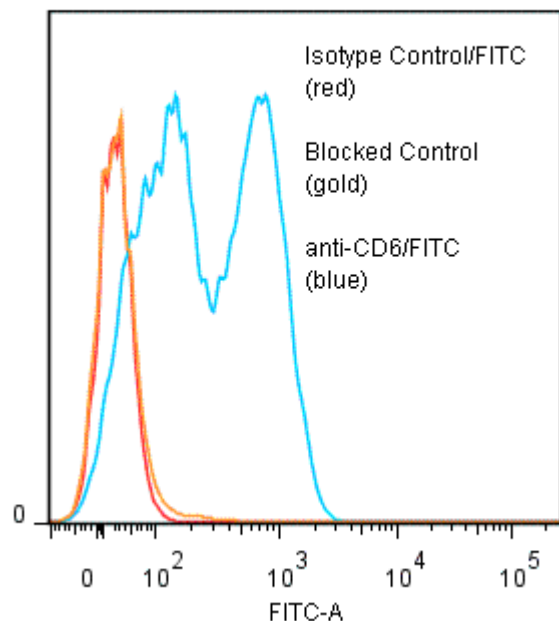
PRODUCT STABILITY: Product should retain activity for at least 12 months after shipping date when stored as recommended. Ship Date: _____

BUFFER: 50 mM Sodium Phosphate pH 7.5, 100 mM Potassium Chloride, 150mM NaCl, 5% Glycerol, 0.2% BSA, 0.04% NaN₃ (as a preservative).

PRODUCTION: Protein A purified antibody from tissue culture supernatant was reacted with FITC. Unconjugated FITC was separated from antibody/FITC conjugate by desalting column. The antibody/FITC conjugate is at approximately **0.5 mg/ml** with a Fluorescein/IgG molar ratio of 11.1.

PERFORMANCE: Five x 10⁵ cultured Isolymp prepared human Peripheral Blood Mononuclear c3ells (PBMC) per tube were pre incubated 5 minutes with 20 µl of human IgG at 300 µg/ml (to minimize non specific Fc binding) after which they were incubated 45 minutes on ice with 80 µl of product at a **1:50** dilution (10 µg/ml). They were then washed three times, fixed and analyzed by FACS. A 46% sub population of the cells stained strongly positive with a mean shift of **1.62 log₁₀** fluorescent units when compared to a Mouse IgG1/FITC negative control (Catalog # 278-040) at a similar concentration. Binding was blocked when cells were pre incubated 10 minutes with 20 µl of 0.5 mg/ml anti-CD6 antibody (Catalog #151-020).

Binding of anti-CD6/FITC to human PBMC



* **Research Use Only. Not for use in Diagnostic procedures.**