

PERFORMANCE DATA SHEET

2125

Monoclonal anti-human CD5/FITC*

mAb name/Clone: UCHT2

Isotype: Mouse IgG1

Immunogen: Human thymocytes/Sezary T cells

CATALOG#: 150-040

QUANTITY: 120 tests

VOLUME IN VIAL: 0.2 ml

WORKING DILUTION: 1:50 (or use 1.6µl of concentrated stock per 5 x 10⁵-cell test)

INFORMATION: Human CD5 is believed to be an alternative signaling molecule found on all mature T cells, on most thymocytes and on a subpopulation of mature B cells expressing autoantibodies. The ligand for CD5 is CD72. Antibody UCHT2 recognizes epitope 2 of the CD5 molecule of approximately 67 kd. Antibody UCHT2 does not stimulate CD5⁺ PBMNC.

References: P.C.L. Beverly & R.E. Callard. "Protides of the Biological Fluids" (1981) Vol. **29**: 653-658, H. Peeters (ed.), Pergamon Press, Oxford. Leukocyte Typing IV (W. Knapp, et al, eds.) Oxford University Press, Oxford (1989) p. 331-338. G.S. Wood & P.S. Freudenthal, (1992) Am J Pathol **141**: 789-795. P.M. Lydyard, et al, (1993) Immunol Lett **38**: 159-166.

STORAGE CONDITIONS: Store at 2 - 5°C. Freeze/Thawing is not recommended. Protect from light.

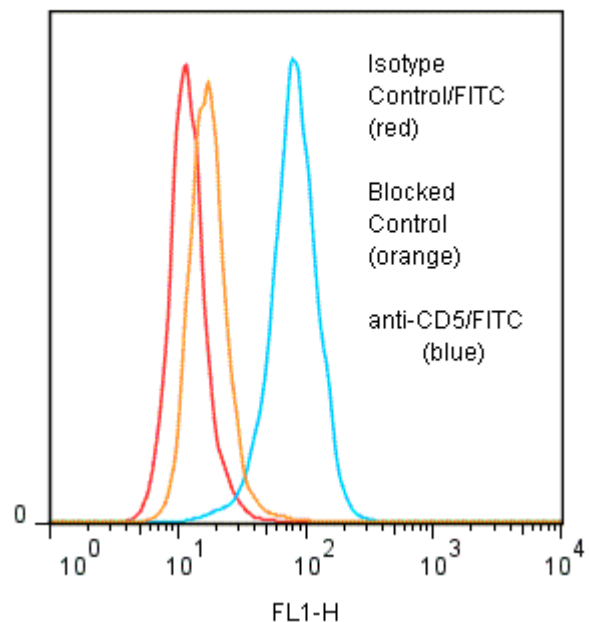
PRODUCT STABILITY: Product should retain activity for at least 12 months after shipping date when stored as recommended. Ship Date: _____

BUFFER: 50 mM Sodium Phosphate pH 7.5, 100 mM Potassium Chloride, 150mM NaCl, 5% Glycerol, 0.2% BSA, 0.04% NaN₃ (as a preservative).

PRODUCTION: Protein A purified antibody from tissue culture supernatant was reacted with FITC. Unconjugated FITC was separated from conjugate by desalting column. The antibody/FITC conjugate is at 0.25 mg/ml.

PERFORMANCE: Five x 10⁵ cultured CEM cells were washed and incubated 45 minutes on ice with 80 µl of anti-CD5/FITC at a 1:50 dilution (5 µg/ml). Cells were washed three times, fixed and analyzed by FACS. Cells stained positive with a mean shift of 0.81 log₁₀ fluorescent units when compared to a Mouse IgG1/FITC negative control (Catalog #278-040). Binding was blocked when cells were pre incubated with 20 µl of 0.5 mg/ml anti-CD5 antibody (cat# 150-020).

Binding of anti-CD5/FITC to human CEM cells



* Research Use Only. Not for use in Diagnostic procedures.

Ancell Corporation P.O. Box Bayport, MN 55003-0087 USA
Phone: Toll free 800-374-9523 or 651-439-0835 Fax: 651-439-1940