

PERFORMANCE DATA SHEET

2135

Monoclonal anti-human CD1c***mAb name/Clone:** M241**Isotype:** Mouse IgG1 κ **Immunogen:** Human T cell line Molt 4**CATALOG#:** 146-820 (Preservative-free)**QUANTITY:** 100 μ g**CONCENTRATION:** 1.0 mg/ml

INFORMATION: The human CD1 genetic locus consists of five closely related genes. Three of the gene products (CD1a, CD1b and CD1c) have been officially clustered using antibodies and are expressed on cortical thymocytes, a subset of B cells, and on most professional antigen presenting cells. CD1 molecules have a specialized lipid antigen-presenting function and it is unlikely that they present conventional peptide antigens. CD1 may also be involved in costimulation. Antibody M241 recognizes the CD1c molecule of about 48 kd.

References: R.W. Knowles and W. F. Bodmer (1982) Eur J Immunol **12**: 676-681. Leukocyte Typing III (A.J. McMichael, et al, eds.) Oxford University Press, Oxford, (1987) p. 882. Leukocyte Typing V (S.F. Schlossman, et al, eds.) Oxford University Press, Oxford, (1995) p. 337-341. E.M. Beckman, et al, (1994) Nature **372**: 691-694. S. Blumberg, et al, (1995) Immunol Rev **147**: 5-29. S.M. Behar, et al, (1995) J Exp Med **182**: 2007-2018.

STORAGE CONDITIONS: Store at 2 - 5°C. Open under aseptic conditions. Freeze/Thawing is not recommended.

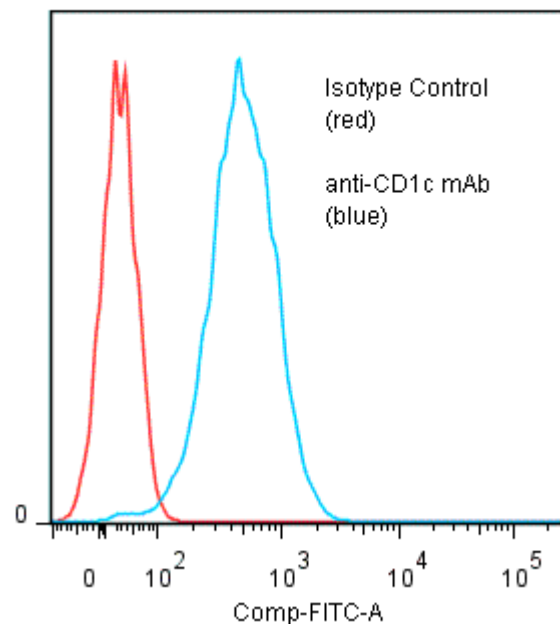
PRODUCT STABILITY: Product should retain activity for at least 6 months after shipping date when stored as recommended. Ship Date: _____

BUFFER : 50 mM Sodium Phosphate pH 7.5, 100 mM Potassium Chloride, 150mM NaCl.

PRODUCTION: Antibody was Protein A purified from (low FBS containing) tissue culture supernatant. Purity was >95% Immunoglobulin by SDS-PAGE with less than 1% Bovine Immunoglobulin. Product was 0.2 μ sterile filtered and viald under aseptic conditions.

PERFORMANCE: Five x 10⁵ cultured human **Molt-4** cells per tube were incubated 45 minutes on ice with 80 μ l anti-CD1c antibody at **10 μ g/ml**. Cells were washed twice and incubated with 2° reagent Goat anti-Mouse IgG/FITC (Catalog #232-011) at a 1:60 dilution factor, after which they were washed three times, fixed and analyzed by FACS. Cells stained positive with a mean shift of **1.45 log₁₀** fluorescent units when compared to a Mouse IgG1 negative control (Catalog # 278-010).

**Binding of anti-CD1c mAb
+GAM/FITC human Molt-4 cells**



***Research use only. Not for use in Diagnostic procedures..**