

PERFORMANCE DATA SHEET

2402

Monoclonal anti-human CD1c /FITC*

mAb name/Clone: M241

Isotype: Mouse IgG1κ

Immunogen: Human T cell line Molt 4

CATALOG#: 146-040

QUANTITY: 120 tests

VOLUME IN VIAL: 0.2ml

WORKING DILUTION: 1:50 (or use 1.6ul of concentrated stock per 5 x 10⁵-cell test)

INFORMATION: The human CD1 genetic locus consists of five closely related genes. Three of the gene products (CD1a, CD1b and CD1c) have been officially clustered using antibodies and are expressed on cortical thymocytes, a subset of B cells, and on most professional antigen presenting cells. CD1 molecules have a specialized lipid antigen-presenting function and it is unlikely that they present conventional peptide antigens. CD1 may also be involved in costimulation. Antibody M241 recognizes the CD1c molecule of about 48 kd.

References: R.W. Knowles and W. F. Bodmer (1982) Eur J Immunol **12**: 676-681. Leukocyte Typing III (A.J. McMichael, et al, eds.) Oxford University Press, Oxford, (1987) p. 882. Leukocyte Typing V (S.F. Schlossman, et al, eds.) Oxford University Press, Oxford, (1995) p. 337-341. E.M. Beckman, et al, (1994) Nature **372**: 691-694. S. Blumberg, et al, (1995) Immunol Rev **147**: 5-29. S.M. Behar, et al, (1995) J Exp Med **182**: 2007-2018.

STORAGE CONDITIONS: Store at 2 - 5°C. Freeze/Thawing is not recommended.

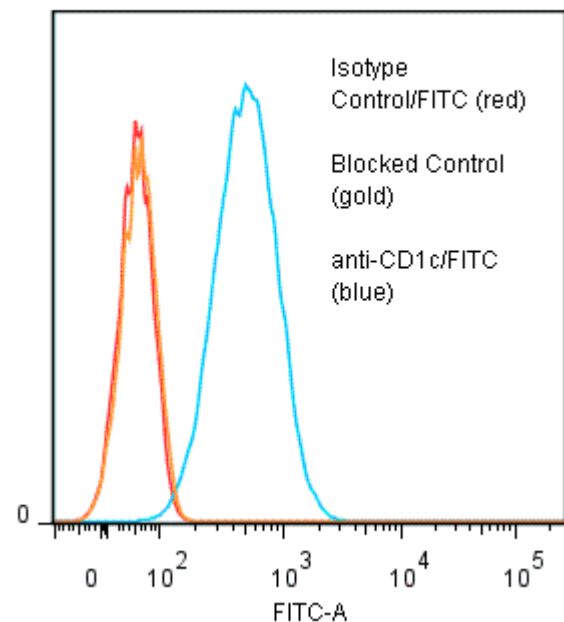
PRODUCT STABILITY: Product should retain activity for at least 12 months after shipping date when stored as recommended. Ship Date: _____

BUFFER: 50 mM Sodium Phosphate pH 7.5, 100 mM Potassium Chloride, 150mM NaCl, 5% Glycerol, 0.2% BSA, 0.04% NaN₃ (as a preservative).

PRODUCTION: Protein A purified antibody from tissue culture supernatant was reacted with FITC. Unconjugated FITC was separated from antibody/FITC conjugate by desalting column. The antibody/FITC conjugate is at **0.5 mg/ml** with a Fluorescein/IgG molar ratio of 8.7.

PERFORMANCE: Five x 10⁵ cultured human **Molt-4** cells per tube were incubated 45 minutes on ice with 80 µl anti-CD1c/FITC at a **1:50** dilution (10ug/ml). Cells were washed three times, fixed and analyzed by FACS. Cells stained positive with a mean shift of **1.06** log₁₀ fluorescent units when compared to a Mouse IgG1/FITC negative control (Catalog #278-040). Binding was blocked when cells were pre incubated with 20 µl of 0.5mg/ml unconjugated antibody (cat# 146-020).

Binding of anti-CD1c/FITC to human Molt-4 cells



* **Research Use Only. Not for use in Diagnostic procedures.**