

**PERFORMANCE DATA SHEET**

1816

**Monoclonal anti-human CD2(LFA-2, T11)/R-PE \***

**mAb name/Clone:** UMCD2/IE7E8

**Isotype:** Mouse IgG1k

**Immunogen:** Human rheumatoid synovial T cell line (ST-1)

**CATALOG#:** 143-050

**QUANTITY:** 120 tests

**VOLUME IN VIAL:** 0.2 ml

**WORKING DILUTION:** 1:50 (or use 1.6µl of concentrated stock per 5 x 10<sup>5</sup>-cell test)

**INFORMATION:** Human CD2 is a T-lineage glycoprotein with roles in cell-cell adhesion and the transduction of activation signals. Multiple ligands for CD2 include CD58 (LFA-3), CD59, and CD48. CD2 may play a role in regulating T cell energy. Antibody UMCD2 recognizes the T11<sub>1</sub> epitope of the 50 kd human CD2 molecule. Antibody UMCD2 is useful for studying CD2 ligand-binding mechanisms involved with T cell development and activation.

**References:** K.F. Kozarsky, et al, (1993) Cell Immunol **150**: 235-246. Leukocyte Typing V (S.F. Schlossman, et al, eds.) Oxford University Press, Oxford, (1995) p. 342-352. G.M. Bell & J.B. Imboden (1995) J Immunol **155**: 2805-2807.

**STORAGE CONDITIONS:** Store at 2 - 5°C. Do not freeze! Protect from light.

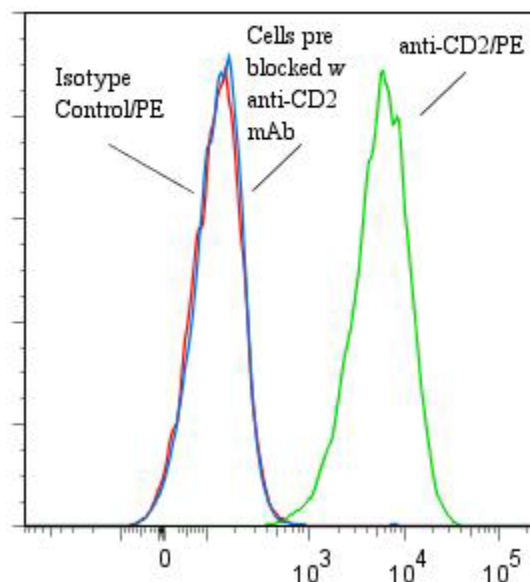
**PRODUCT STABILITY:** Product should retain activity for at least 12 months after shipping date when stored as recommended. Ship Date: \_\_\_\_\_

**BUFFER:** 50 mM Sodium Phosphate pH 7.5, 500 mM Potassium Chloride, 150mM NaCl, 15% Glycerol, 0.2% BSA, 0.04% NaN<sub>3</sub> (as a preservative).

**PRODUCTION:** Protein A purified antibody from tissue culture supernatant was conjugated to R-Phycoerythrin through a sulfo-ester linkage. Unconjugated antibody was removed using size exclusion chromatography. Antibody conjugate is at **250 µg/ml** with an A<sub>565</sub>/A<sub>280</sub> ratio of 3.28.

**PERFORMANCE:** Five x 10<sup>5</sup> cultured human **HPB-MLT** cells were incubated 45 minutes on ice with 80 µl of product at a dilution factor of **1:50** (5 µg/ml). Cells were washed three times, fixed and analyzed by FACS. Cells stained positive with a mean shift of **1.57 log<sub>10</sub>** fluorescent units when compared to a Mouse IgG1/R-PE negative control (Catalog #278-050) at a similar concentration. Binding was blocked when cells were pre incubated 10 minutes with 20 µl of 0.5 mg/ml anti-CD2 antibody (Catalog #143-020).

**Binding of anti-CD2/PE to human HPB-MLT cells**



*\*Research use only. Not for use in diagnostic procedures.*