

**PERFORMANCE DATA SHEET**

1648

**Monoclonal anti-human CD2/Biotin\***

**Clone:** UMCD2/1E7E8

**Isotype:** Mouse IgG2ak

**Immunogen:** Human rheumatoid synovial T cell line (ST-1)

**CATALOG#:** 143-030

**QUANTITY:** 100 µg

**CONCENTRATION:** 1.0 mg/ml

**INFORMATION:** Human CD2 is a T-lineage glycoprotein with roles in cell-cell adhesion and the transduction of activation signals. Multiple ligands for CD2 include CD58 (LFA-3), CD59, and CD48. CD2 may play a role in regulating T cell energy. Antibody UMCD2 recognizes the T11<sub>1</sub> epitope of the 50 kd human CD2 molecule. Antibody UMCD2 is useful for studying CD2 ligand-binding mechanisms involved with T cell development and activation.

**References:** K.F. Kozarsky, et al, (1993) Cell Immunol **150**: 235-246. Leukocyte Typing V (S.F. Schlossman, et al, eds.) Oxford University Press, Oxford, (1995) p. 342-352. G.M. Bell & J.B. Imboden (1995) J Immunol **155**: 2805-2807.

**STORAGE CONDITIONS:** Store at 2 - 5°C. Freeze/thawing not recommended.

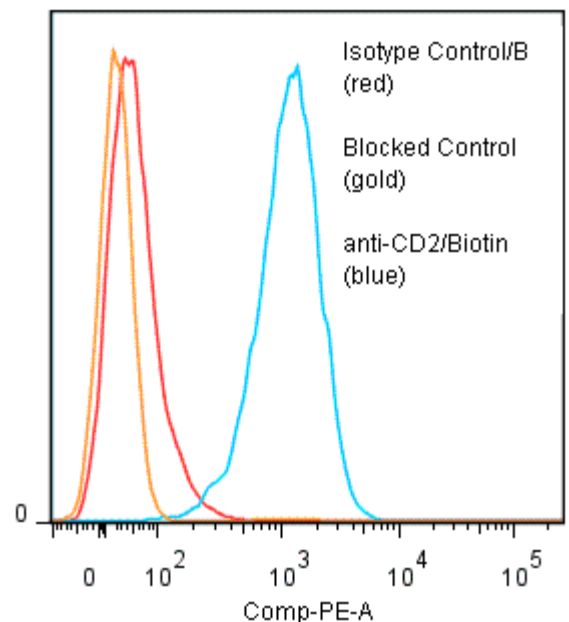
**PRODUCT STABILITY:** Product should retain activity for at least 12 months after shipping date when stored as recommended. Ship Date: \_\_\_\_\_

**BUFFER:** 50 mM Sodium Phosphate pH 7.5, 100 mM Potassium Chloride, 150mM NaCl, 5% Glycerol, 0.2% BSA, 0.04% Na<sub>3</sub> (as a preservative).

**PRODUCTION:** Antibody from (low FBS containing) tissue culture supernatant was Protein A purified to >95% mouse immunoglobulin by SDS-PAGE (<1% bovine immunoglobulin), and reacted with NHS-Biotin. Unconjugated Biotin was removed from conjugate using a desalting column.

**PERFORMANCE:** Briefly, 5 x 10<sup>5</sup> HPB-MLT human tumor cells were washed and incubated 45 minutes on ice with 80 µl of anti-CD2/Biotin at a concentration of 5 µg/ml. Cells were then washed twice and incubated 45 minutes with 20 µl of 2<sup>o</sup> reagent Streptavidin R-Phycoerythrin (Catalog #253-050), after which they were washed three times, fixed and analyzed by FACS. Cells stained positive with a mean shift of 1.37 log<sub>10</sub> fluorescent units when compared to a Mouse IgG2a/Biotin negative control (Catalog # 281-030). This shift was blocked when cells were pre-incubated 10 minutes with 20 µl of 0.5 mg/ml anti-CD2 antibody (Catalog #143-020).

**Binding of anti-CD2/Biotin +SA/PE to human HPB-MLT cells**



\* *Research Use Only. Not for use in Diagnostic procedures.*