

**PERFORMANCE DATA SHEET**

2131

**Monoclonal anti-human CD2(LFA-2, T11)\*****mAb name/Clone:** UMCD2/IE7E8**Isotype:** Mouse IgG2a $\kappa$ **Immunogen:** Human rheumatoid synovial T cell line (ST-1)**CATALOG#:** 143-020**QUANTITY:** 100  $\mu$ g**CONCENTRATION:** 1.0 mg/ml

**INFORMATION:** Human CD2 is a T-lineage glycoprotein with roles in cell-cell adhesion and the transduction of activation signals. Multiple ligands for CD2 include CD58 (LFA-3), CD59, and CD48. CD2 may play a role in regulating T cell energy. Antibody UMCD2 recognizes the T11<sub>1</sub> epitope of the 50 kd human CD2 molecule, and blocks E rosette formation (1).

**References:** K.F. Kozarsky, et al, (1993) Cell Immunol **150**: 235-246. Leukocyte Typing V (S.F. Schlossman, et al, eds.) Oxford University Press, Oxford, (1995) p. 342-352. G.M. Bell & J.B. Imboden (1995) J Immunol **155**: 2805-2807.

**STORAGE CONDITIONS:** Store at 2 - 5°C. Freeze/Thawing is not recommended.

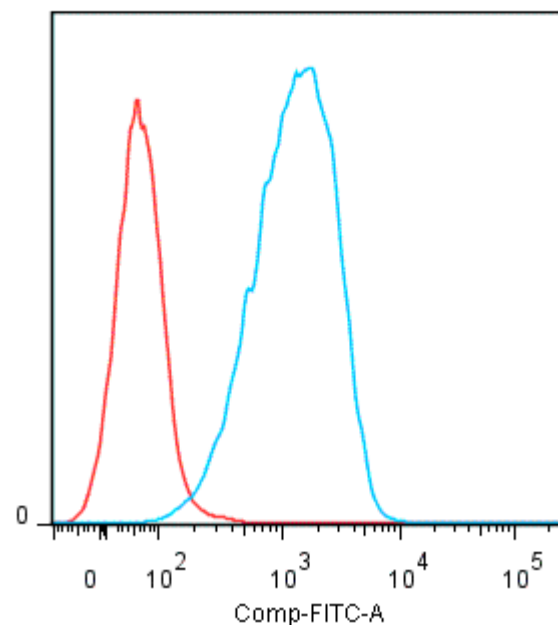
**PRODUCT STABILITY:** Product should retain activity for at least 12 months after shipping date when stored as recommended. Ship Date: \_\_\_\_\_

**BUFFER:** 50 mM Sodium Phosphate pH 7.5, 100 mM Potassium Chloride, 150mM NaCl, 0.5 mg/ml Gentamicin Sulfate (as a preservative).

**PRODUCTION:** Antibody was Protein A purified from (low FBS containing) tissue culture supernatant. Purity was >95% Immunoglobulin by SDS-PAGE with less than 1% Bovine Immunoglobulin.

**PERFORMANCE:** Five x 10<sup>5</sup> cultured **HPB-MLT** human tumor cells were washed and incubated 45 minutes on ice with 80  $\mu$ l of anti-CD2 antibody at 5  $\mu$ g/ml. Cells were washed twice and incubated with 2<sup>o</sup> reagent Goat anti-Mouse IgG/FITC (Catalog #232-011), after which they were washed three times, fixed and analyzed by FACS. Cells stained positive with a mean shift of 1.4 log<sub>10</sub> fluorescent units when compared to a Mouse IgG2a negative control (Catalog #281-010) at a similar concentration.

**Binding of anti-CD2 mAb +GAM/FITC to human HPB-MLT cells**



\* **Research Use Only. Not for use in Diagnostic procedures.**