

PERFORMANCE DATA SHEET

1816

Monoclonal anti-human CD1b*

mAb Name: SN13 **Clone:** K5-1B8

Isotype: Mouse IgG1 κ

Immunogen: Membrane preparation of human thymocytes

CATALOG#: 142-820 (Preservative-free)

QUANTITY: 100 μ g

CONCENTRATION: 1.0 mg/ml

INFORMATION: The human CD1 genetic locus consists of five closely related genes. Three of the gene products (CD1a, CD1b and CD1c) have been officially clustered using antibodies and are expressed on cortical thymocytes, a subset of B cells, and on most professional antigen presenting cells. CD1 molecules have a specialized lipid antigen-presenting function. Antibody SN13 is specific for the CD1b molecule of about 45kd. Specificity was confirmed using CD1b transfectants.

References: Leukocyte Typing III (A.J. McMichael, et al, eds.) Oxford University Press, Oxford, (1987) p. 882. Leukocyte Typing V (S.F. Schlossman, et al, eds.) Oxford University Press, Oxford, (1995) p. 337-341. E.M. Beckman, et al, (1994) Nature **372**: 691-694.

STORAGE CONDITIONS: *Store at 2 - 5°C.* Freeze/Thawing is not recommended. **Open under aseptic conditions.**

PRODUCT STABILITY: Product should retain activity for at least 12 months after shipping date when stored as recommended. Ship Date: _____

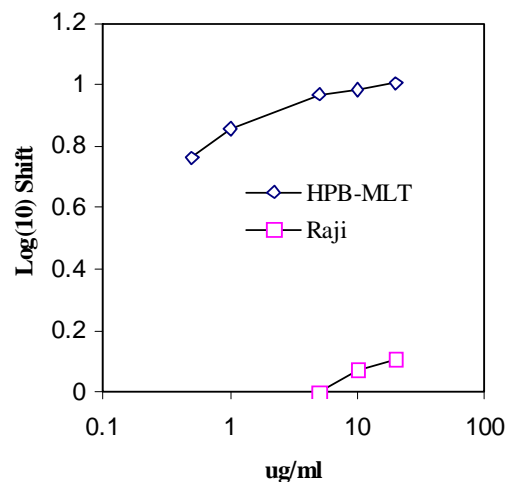
BUFFER: 50 mM Sodium Phosphate pH 7.5, 100 mM Potassium Chloride, 150mM NaCl.

PRODUCTION: Antibody was Protein A purified from (low FBS containing) tissue culture supernatant. Purity was >95% Immunoglobulin by SDS-PAGE and contains less than 1% Bovine Immunoglobulin. Product was 0.2 μ m filtered and viald under aseptic conditions.

PERFORMANCE: Five x 10⁵ cultured **HPB-MLT** human tumor cells were washed and incubated 45 minutes on ice with 80 μ l of anti-CD1b antibody at **5 μ g/ml**. Cells were washed twice and incubated with with 2^o reagent Goat anti-Mouse IgG/FITC (Catalog #232-011), after which they were washed three times, fixed and analyzed by FACS. Cells stained positive with a mean shift of **0.99 log₁₀** fluorescent units when compared to a Mouse IgG1 negative control (Catalog #278-010) at a similar concentration.

**This Product is intended for Laboratory Research use only.*

Binding of anti-CD1b antibody to human cell lines



Ancell Corporation P.O. Box 87 243 Third Street North Bayport, MN 55003-0087 USA
Phone: Toll free 800-374-9523 or 651-439-0835 Fax: 651-439-1940