

PERFORMANCE DATA SHEET

2511

Monoclonal anti-human IgM/FITC*

mAb name/Clone: UCHB1

Isotype: Mouse IgG1

Immunogen: Prolymphocytic leukemic B cells

CATALOG#: 141-040

QUANTITY: 120 tests

VOLUME IN VIAL: 0.2 ml

WORKING DILUTION: 1:50 (or use 1.6µl of concentrated stock per 5 x 10⁵-cell test)

INFORMATION: Human surface membrane bound IgM complexes with a heterodimer of transmembrane proteins of Igα and Igβ (CD79a and CD79b) to form the B cell antigen receptor (BCR). The BCR complex plays an important role in B cell development and activation. The transmembrane region of mIgM is essential for functional BCR complex assembly. Antibody UCHB1 recognizes surface expressed IgM.

References: R.J. Armitage, et al, (1988) Eur J Immunol **18**: 67-76. J. Smith-Ravin, et al, (1990) Clin Exp Immunol **82**: 181-187. A.L. DeFranco, et al, (1994) Chem Immunol **59**: 156-172. S.A. Grupp, et al, (1995) J Exp Med **181**: 161-168.

STORAGE CONDITIONS: Store at 2 - 5°C. Freeze/Thawing is not recommended. Protect from light.

PRODUCT STABILITY: Product should retain activity for at least 12 months after shipping date when stored as recommended. Ship Date: _____

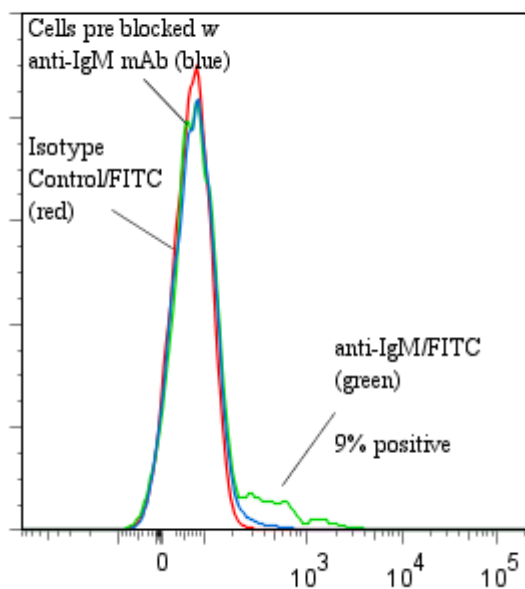
BUFFER: 50 mM Sodium Phosphate pH 7.5, 100 mM Potassium Chloride, 150mM NaCl, 5% Glycerol, 0.2% BSA, 0.04% Na₃ (as a preservative).

PRODUCTION: Protein A purified antibody from tissue culture supernatant was reacted with FITC.

Unconjugated FITC was separated from antibody/FITC conjugate by desalting column. The antibody/FITC conjugate is at approximately **0.5 mg/ml** with a Fluorescein to mAb molar ratio of 6.0.

PERFORMANCE: Five x 10⁵ ficoll prepared **human peripheral white blood cells** were washed and preincubated 5 minutes with 20 µl of 250 µg/ml human IgG (To block non specific binding) after which they were incubated 45 minutes on ice with 80 µl of product at a **1:50** dilution (10µg/ml). Cells were washed three times, fixed and analyzed by FACS. A net **9%** sub population of the cells stained positive with a mean shift of **1.47** log₁₀ fluorescent units when compared to a Mouse IgG1/FITC negative control (Cat #278-040) at a similar concentration. Binding was blocked when cells were pre incubated with 20 µl of 0.5mg/ml anti-human IgM mAb (Cat #141-020).

Binding of anti-IgM/FITC to human PBMC



**This Product is intended for Laboratory Research use only.*