

PERFORMANCE DATA SHEET

3321

Monoclonal anti-human Lambda Light Chain*

mAb name/Clone: ICO106

Isotype: Mouse IgG1

Immunogen: Human Ig

CATALOG#: 138-820 (Preservative-free)

QUANTITY: 100 µg

CONCENTRATION: 1.0 mg/ml

INFORMATION: Human immunoglobulins are glycoproteins composed of two disulfide-bonded heavy (H) chain subunits, each of which is linked by interchain disulfide bonds to a light (L) chain forming a tetramolecular complex. There are five classes of immunoglobulins, designated IgG, IgA, IgM, IgD and IgE, which are defined by differences in the constant region of H chains. L chains are divided into **kappa** or **lambda** classifications based on structural antigenic differences. All classes of immunoglobulins have been found on the cell surface of B lymphocytes where they function as antigen receptors to elicit antigen-dependent proliferation and secretion of antigen specific soluble circulating antibodies. Antibody ICO106 recognizes cell surface lambda chain on B cells

References: 1. Basic and Clinical Immunology, Seventh edition (D. P. Sites & A. I. Terr, eds.) Appleton & Lange., Norwalk, CT (1991).

STORAGE CONDITIONS: Store at 2 - 5°C. Freeze/Thawing is not recommended. Open under aseptic conditions.

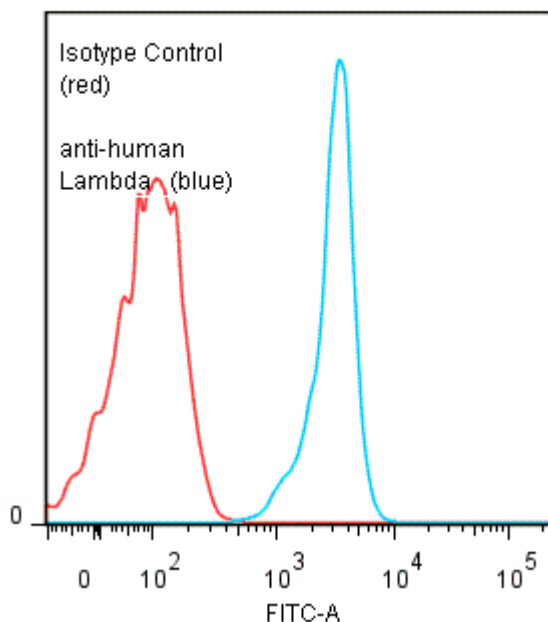
PRODUCT STABILITY: Product should retain activity for at least 12 months after shipping date when stored as recommended. Ship Date: _____

BUFFER: 50 mM Sodium Phosphate pH 7.5, 100 mM Potassium Chloride, 150mM NaCl.

PRODUCTION: Antibody was Protein A purified from (low FBS containing) tissue culture supernatant. Purity was >95% Immunoglobulin by SDS-PAGE with less than 1% Bovine Immunoglobulin. Product was 0.2 µm filtered and vialled under aseptic conditions.

PERFORMANCE: Anti-human Lambda Light Chain mAb was tested for FACS binding to human Lambda-coated CML latex beads. Five x 10⁵ human Lambda-coated CML Latex beads per tube were washed and incubated 45 minutes on ice with 80 µl of anti-Lambda mAb at 10 µg/ml. They were washed twice and incubated with 2^o reagent Goat anti-Mouse IgG/FITC (Catalog #232-011), after which they were washed three times, fixed and analyzed by FACS. Beads stained positive with a mean shift of 1.52 log₁₀ fluorescent units when compared to Mouse IgG1 Isotype control (Catalog #278-010).

Binding of anti-human Lambda mAb +GAM/FITC to Lambda-coated CML beads



* Research Use Only. Not for use in Diagnostic procedures.