

# PERFORMANCE DATA SHEET

3321

## Monoclonal anti-human Lambda Light Chain\*

**mAb name/Clone:** ICO106

**Isotype:** Mouse IgG1

**Immunogen:** Human Ig

**CATALOG#:** 138-020

**QUANTITY:** 100 µg

**CONCENTRATION:** 1.0 mg/ml

**INFORMATION:** Human immunoglobulins are glycoproteins composed of two disulfide-bonded heavy (H) chain subunits, each of which is linked by interchain disulfide bonds to a light (L) chain forming a tetramolecular complex. There are five classes of immunoglobulins, designated IgG, IgA, IgM, IgD and IgE, which are defined by differences in the constant region of H chains. L chains are divided into **kappa** or **lambda** classifications based on structural antigenic differences. All classes of immunoglobulins have been found on the cell surface of B lymphocytes where they function as antigen receptors to elicit antigen-dependent proliferation and secretion of antigen specific soluble circulating antibodies. Antibody ICO106 recognizes cell surface lambda chain on B cells

**References:** 1. Basic and Clinical Immunology, Seventh edition (D. P. Sites & A. I. Terr, eds.) Appleton & Lange., Norwalk, CT (1991).

**STORAGE CONDITIONS:** Store at 2 - 5°C. Freeze/Thawing is not recommended.

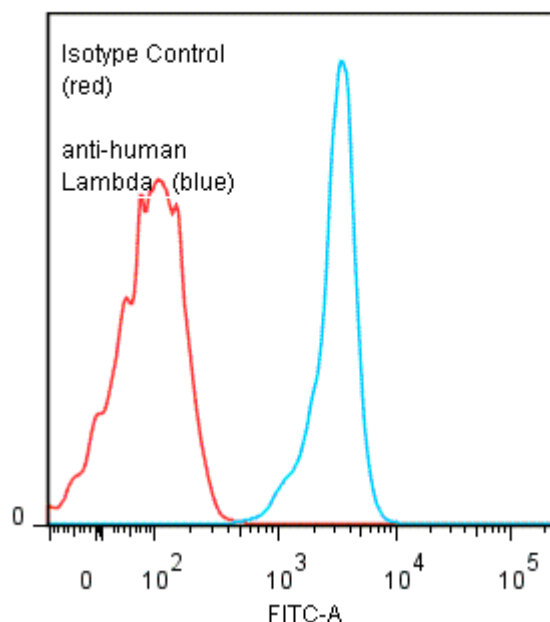
**PRODUCT STABILITY:** Product should retain activity for at least 12 months after shipping date when stored as recommended. Ship Date: \_\_\_\_\_

**BUFFER:** 50 mM Sodium Phosphate pH 7.5, 100 mM Potassium Chloride, 150mM NaCl, 0.5 mg/ml Gentamicin Sulfate (as a preservative).

**PRODUCTION:** Antibody was Protein A purified from (low FBS containing) tissue culture supernatant. Purity was >95% Immunoglobulin by SDS-PAGE with less than 1% Bovine Immunoglobulin.

**PERFORMANCE:** Anti-human Lambda Light Chain mAb was tested for FACS binding to human Lambda-coated CML latex beads. Five x 10<sup>5</sup> human Lambda-coated CML Latex beads per tube were washed and incubated 45 minutes on ice with 80 µl of anti-Lambda mAb at 10 µg/ml. They were washed twice and incubated with 2<sup>o</sup> reagent Goat anti-Mouse IgG/FITC (Catalog #232-011), after which they were washed three times, fixed and analyzed by FACS. Beads stained positive with a mean shift of 1.52 log<sub>10</sub> fluorescent units when compared to Mouse IgG1 Isotype control (Catalog #278-010).

### Binding of anti-human Lambda mAb +GAM/FITC to Lambda-coated CML beads



\* Research Use Only. Not for use in Diagnostic procedures.