

PERFORMANCE DATA SHEET

2610

Monoclonal anti-human Kappa Light chain*

mAb name/Clone: L1C1

Isotype: Mouse IgG1 κ

Immunogen: Human B lymphoma cells

CATALOG#: 136-820 (Preservative-free)

QUANTITY: 100 μ g

CONCENTRATION: 1.0 mg/ml

INFORMATION: Human immunoglobulins are glycoproteins composed of two disulfide-bonded heavy (H) chain subunits, each of which is linked by interchain disulfide bonds to a light (L) chain forming a tetramolecular complex. There are five classes of immunoglobulins, designated IgG, IgA, IgM, IgD and IgE, which are defined by differences in the constant region of H chains. L chains are divided into kappa or lambda classifications based on structural antigenic differences. All classes of immunoglobulins have been found on the cell surface of B lymphocytes where they function as antigen receptors to elicit antigen-dependent proliferation and secretion of antigen specific soluble circulating antibodies. Antibody L1C1 recognizes cell surface kappa on B cells.

References: 1. Basic and Clinical Immunology, Seventh edition (D. P. Sites & A. I. Terr, eds.) Appleton & Lange., Norwalk, CT (1991).

STORAGE CONDITIONS: Store at 2 - 5°C. Freeze/Thawing is not recommended. Open under aseptic conditions.

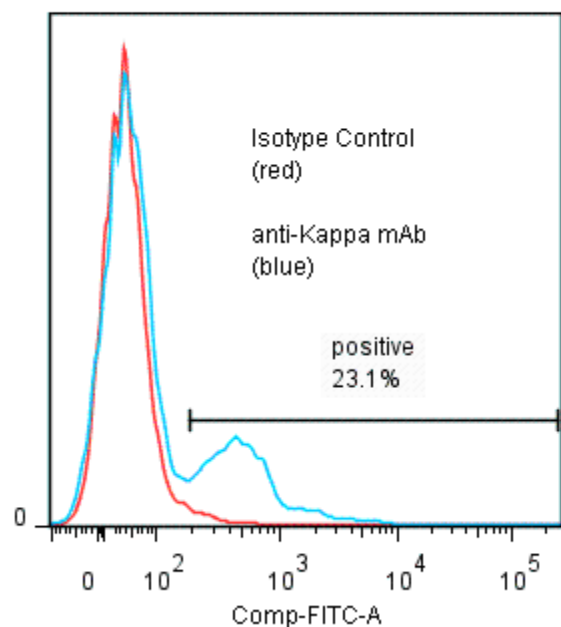
PRODUCT STABILITY: Product should retain activity for at least 12 months after shipping date when stored as recommended. Ship Date: _____

BUFFER: 50 mM Sodium Phosphate pH 7.5, 100 mM Potassium Chloride, 150mM NaCl.

PRODUCTION: Antibody was Protein A purified from (low FBS containing) tissue culture supernatant. Purity was >95% Immunoglobulin by SDS-PAGE with less than 1% Bovine Immunoglobulin. Product was 0.2 μ m filtered and viald under aseptic conditions.

PERFORMANCE: Five x 10⁵ ficoll prepared **human peripheral white blood cells** were pre incubated ~5 minutes with 20 μ l of 250 μ g/ml human Ig after which they were incubated 45 minutes on ice with 80 μ l of anti-Kappa antibody at 5 μ g/ml. Cells were washed twice and incubated with 2^o reagent Goat anti-Mouse IgG/FITC (Catalog #232-011), after which they were washed three times, fixed and analyzed by FACS. A net 28% sub population of the cells stained positive with a mean shift of 1.20 log₁₀ fluorescent units when compared to a Mouse IgG1 negative control (Catalog #278-010) at a similar concentration.

**Binding of anti-Kappa mAb
+GAM/FITC to human PBMC**



* *Research Use Only. Not for use in Diagnostic procedures.*