

**PERFORMANCE DATA SHEET**

3225

**Monoclonal anti-human Kappa Light chain/FITC\***

**mAb name/Clone:** L1C1

**Isotype:** Mouse IgG1κ

**Immunogen:** Human B lymphoma cells

**CATALOG#:** 136-040

**QUANTITY:** 120 tests

**VOLUME IN VIAL:** 0.2ml

**WORKING DILUTION:** 1:50 (or use 1.6µl of concentrated stock per 5 x 10<sup>5</sup>-cell test)

**INFORMATION:** Human immunoglobulins are glycoproteins composed of two disulfide-bonded heavy (H) chain subunits, each of which is linked by interchain disulfide bonds to a light (L) chain forming a tetramolecular complex. There are five classes of immunoglobulins, designated IgG, IgA, IgM, IgD and IgE, which are defined by differences in the constant region of H chains. L chains are divided into kappa or lambda classifications based on structural antigenic differences. All classes of immunoglobulins have been found on the cell surface of B lymphocytes where they function as antigen receptors to elicit antigen-dependent proliferation and secretion of antigen specific soluble circulating antibodies. Antibody L1C1 recognizes cell surface kappa on B cells.

**REFERENCES:** 1. Basic and Clinical Immunology, Seventh edition (D. P. Sites & A. I. Terr, eds.) Appleton & Lange., Norwalk, CT (1991).

**STORAGE CONDITIONS:** Store at 2 - 5°C. Freeze/Thawing is not recommended. Protect from light.

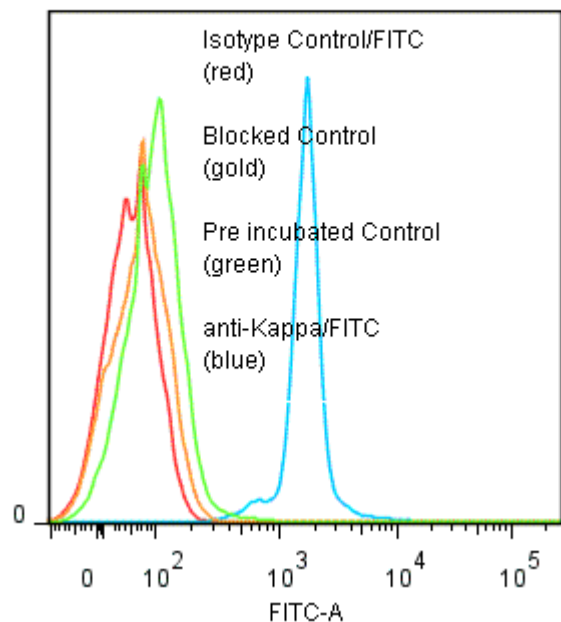
**PRODUCT STABILITY:** Product should retain activity for at least 12 months after shipping date when stored as recommended. Ship Date: \_\_\_\_\_

**BUFFER:** 50 mM Sodium Phosphate pH 7.5, 100 mM Potassium Chloride, 150mM NaCl, 5% Glycerol, 0.2% BSA, 0.04% NaN<sub>3</sub> (as a preservative).

**PRODUCTION:** Protein A purified antibody from tissue culture supernatant was reacted with FITC. Unconjugated FITC was separated from antibody/FITC conjugate by desalting column. The antibody/FITC conjugate is at 0.5 mg/ml with a Fluorescein to mAb molar ratio of 6.0.

**PERFORMANCE:** Anti-Kappa/FITC was tested for binding to human IgA kappa-coated 4µ CML beads (*Inquire*) in FACS. Two x 10<sup>5</sup> human IgA coated beads per tube were spun down and incubated 45 minutes at 4°C with 80µl of anti-Kappa/FITC at a 1:50 dilution (10µg/ml). Tubes were washed twice, fixed and analyzed by FACS. Beads stained positive with a mean shift of 1.58 log<sub>10</sub> fluorescent units when compared to a Mouse IgG1/FITC Isotype control (Catalog #278-040). Binding was blocked when beads were pre incubated 10 minutes with 20 µl of 0.5 mg/ml anti-Kappa antibody (Catalog #136-020) or when reagent was pre incubated with a 5-fold excess of human IgG1kappa (cat# 295-020).

**Binding of anti-Kappa/FITC to huIgA-coated CML beads**



\* *Research Use Only. Not for use in Diagnostic procedures.*

**Ancell Corporation P.O. Box 87 Bayport, MN 55003-0087 USA**  
**Phone: Toll free 800-374-9523 or 651-439-0835 Fax: 651-439-1940**