

**PERFORMANCE DATA SHEET**

2251

**Monoclonal anti-human CD326(EpCAM)/FITC\*****mAb name/Clone:** ANC8D4**Isotype:** Mouse IgG1 $\kappa$ **Immunogen:** Recombinant soluble human CD326**CATALOG#:** 126-040**QUANTITY:** 120 tests**VOLUME IN VIAL:** 0.2ml**WORKING DILUTION:** 1:50 (or use 1.6 $\mu$ l of concentrated stock per 5 x 10<sup>5</sup>-cell test)

**INFORMATION:** Human CD326 (EpCAM, EGP2, HEA) is a 40kD glycoprotein expressed on epithelial cells and many carcinomas. It is an adhesion molecule whose function is implicated in carcinogenesis and erythropoiesis. Antibody ANC8D4 recognizes recombinant CD326 in EIA, and cell surface human CD326 in FACS.

**References:** 1) Rao CG, et al.. (2005) *Int. J. Oncol.* **27**: 49.

**STORAGE CONDITIONS:** Store at 2 - 5°C. Freeze/Thawing is not recommended. Protect from light.

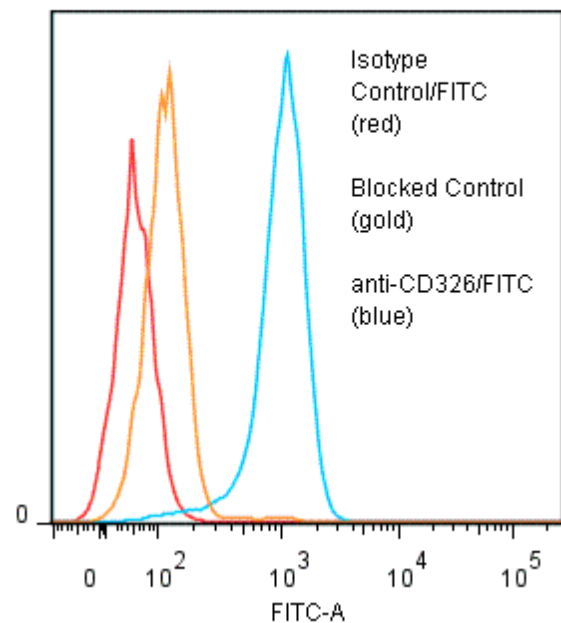
**PRODUCT STABILITY:** Product should retain activity for at least 12 months after shipping date when stored as recommended. Ship Date: \_\_\_\_\_

**BUFFER:** 50 mM Sodium Phosphate pH 7.5, 100 mM Potassium Chloride, 150mM NaCl, 5% Glycerol, 0.2% BSA, 0.04% NaN<sub>3</sub> (as a preservative).

**PRODUCTION:** Protein A purified antibody from tissue culture supernatant was reacted with FITC. Unconjugated FITC was separated from antibody/FITC conjugate by desalting column. The antibody/FITC conjugate is at approximately **0.5 mg/ml** with a Fluorescein/IgG molar ratio of 5.4.

**PERFORMANCE:** Cultured human SW480 cells were harvested by EDTA. Five x 10<sup>5</sup> cells per tube were pre incubated with 20  $\mu$ l of 300  $\mu$ g/ml human IgG (to block non specific binding), after which they were incubated 45 minutes on ice with 80  $\mu$ l of product at a 1:50 dilution (10  $\mu$ g/ml). They were then washed three times, fixed and analyzed by FACS. Cells stained positive with a mean shift of **1.30 log<sub>10</sub>** fluorescent units when compared to a Mouse IgG1/FITC negative control (Catalog # 278-040) at a similar concentration. Binding was blocked when cells were pre incubated 10 minutes with 20  $\mu$ l of 0.5 mg/ml anti-CD326 antibody (Catalog #126-020).

**Binding of anti-CD326/FITC to human SW480E cells**



*\*Research Use Only. Not for use in Diagnostic procedures.*