

**PERFORMANCE DATA SHEET**

3308

**Monoclonal anti- human CD235a (Glycophorin A)\***

**mAb name/Clone:** A63-B/C2

**Isotype:** Mouse IgM

**Immunogen:** Neuraminidase treated human erythrocytes

**CATALOG#:** 122-820 (Preservative-free)

**QUANTITY:** 100 µg

**CONCENTRATION:** 1.0 mg/ml

**INFORMATION:** Human CD235a (glycophorin A) is a sialoglycoprotein expressed early on the cell surface during erythropoiesis as pluripotent stem cells are recruited to differentiate into erythrocytes (1). CD235a (glycophorin A) is a useful marker to study the developmental biology of hematopoietic progenitor cells (2,3). Antibody A63-B/C2 reacts with an extracellular (peptide) domain of CD235a (glycophorin A).

**References:** 1. J.G. Mark, et al, (1999) Blood 93: 4425-4435. 2. N. Debili, et al, (1996) Blood 88: 1284-1296. 3. B.M. Frey, et al, (1998) Blood 91: 2781-2792.

**STORAGE CONDITIONS:** Store at 2 - 5°C. Freeze/Thawing is not recommended. Open under aseptic conditions.

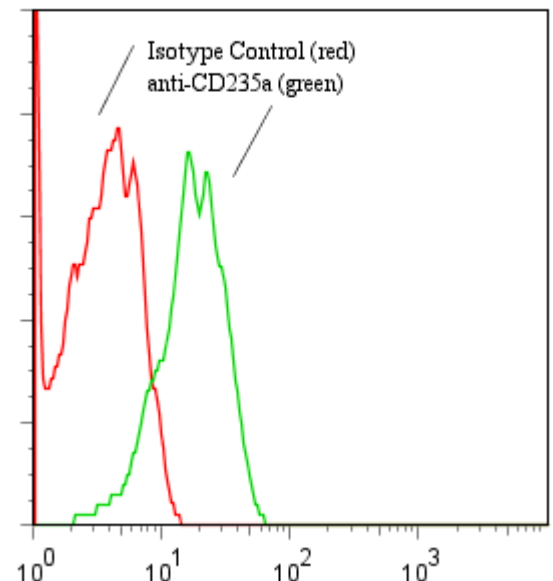
**PRODUCT STABILITY:** Product should retain activity for at least 12 months after shipping date when stored as recommended. Ship Date: \_\_\_\_\_

**BUFFER:** 50 mM Sodium Phosphate pH 7.5, 500 mM Potassium Chloride, 150mM NaCl.

**PRODUCTION:** Antibody from (low FBS containing) tissue culture supernatant was purified to 95% mouse immunoglobulin by SDS-PAGE (<1% bovine immunoglobulin) using size exclusion chromatography. Product was 0.2 µm filtered and vialled under aseptic conditions.

**PERFORMANCE:** Approximately  $10^8 \times 10^6$  human red blood cells were washed and preincubated 5 minutes with 20 µl of 250 µg/ml human IgG (to block non specific binding) after which they were incubated 45 minutes on ice with 80 µl of anti-CD235a (Glycophorin A) antibody at 10 µg/ml. Cells were washed twice and incubated with 2<sup>o</sup> reagent Goat anti-Mouse IgG/FITC (Catalog #232-011); after which they were washed three times, fixed and analyzed by FACS. Cells stained positive with a mean shift of 0.9 log<sub>10</sub> fluorescent units when compared to a Mouse IgM negative control (Catalog # 290-010) at a similar concentration.

**Binding of anti-CD235a mAb +GAM/FITC to human red blood cells**



\* *Research Use Only. Not for use in Diagnostic procedures..*