

**PERFORMANCE DATA SHEET**

3019

**Monoclonal anti-human CD235a (Glycophorin A)/FITC \***

**mAb name/Clone:** A63-B/C2

**Isotype:** Mouse IgM

**Immunogen:** Neuraminidase treated human erythrocytes

**CATALOG#:** 122-040

**QUANTITY:** 120 tests

**VOLUME IN VIAL:** 0.2 ml

**WORKING DILUTION:** 1:50 (or use 1.6µl of concentrated stock per  $5 \times 10^5$ -cell test)

**INFORMATION:** Human CD235a (glycophorin A) is a sialoglycoprotein expressed early on the cell surface during erythropoiesis as pluripotent stem cells are recruited to differentiate into erythrocytes (1). CD235a (glycophorin A) is a useful marker to study the developmental biology of hematopoietic progenitor cells (2,3). Antibody A63-B/C2 reacts with an extracellular (peptide) domain of CD235a (glycophorin A).

**References:** 1. J.G. Mark, et al, (1999) Blood 93: 4425-4435. 2. N. Debili, et al, (1996) Blood 88: 1284-1296. 3. B.M. Frey, et al, (1998) Blood 91: 2781-2792.

**STORAGE CONDITIONS:** Store at 2 - 5°C. Freeze/Thawing is not recommended. Protect from light.

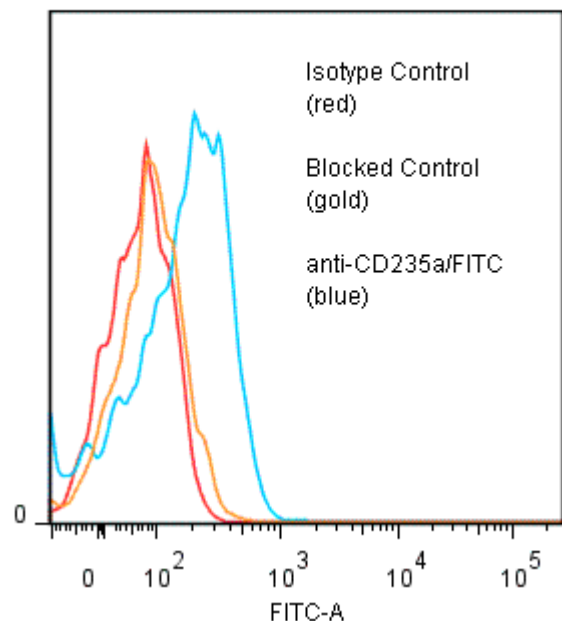
**PRODUCT STABILITY:** Product should retain activity for at least 12 months after shipping date when stored as recommended. Ship Date: \_\_\_\_\_

**BUFFER:** 50 mM Sodium Phosphate pH 7.5, 500 mM Potassium Chloride, 150mM NaCl, 5% Glycerol, 0.2% BSA, 0.04% NaN<sub>3</sub> (as a preservative).

**PRODUCTION:** Antibody from (low FBS containing) tissue culture supernatant was size exclusion purified to 90% Immunoglobulin by SDS-PAGE, and reacted with FITC. Unconjugated FITC was removed from conjugate using a desalting column. Antibody conjugate is at 1.0 mg/ml with a Fluorescein/IgM molar ratio of 49.3.

**PERFORMANCE:** Two ul of whole blood per tube were washed and incubated 45 minutes on ice with 80 µl of anti-CD235a (Glycophorin A)/FITC at a 1:50 dilution (20 µg/ml). They were then washed three times, fixed strained through a 20um minifilter (to remove clumps), and analyzed by FACS using an RBC gate. Cells stained positive with a mean shift of 0.68 log<sub>10</sub> fluorescent units when compared to a Mouse IgM/FITC negative control (Catalog #290-040). Binding was blocked when cells were pre incubated 10 minutes with 20 µl of 0.5 mg/ml anti-CD235a (Glycophorin A) antibody (Catalog #122-020).

**Binding of anti-CD235a/FITC to human RBC**



*\*This Product is intended for Laboratory Research use only.*