

## Monoclonal anti-human CD235a (Glycophorin A)/Biotin\*

**mAb name/Clone:** A63-B/C2

**Isotype:** Mouse IgM

**Immunogen:** Neuraminidase treated human erythrocytes

**CATALOG#:** 122-030

**QUANTITY:** 100 µg

**CONCENTRATION:** 1.0 mg/ml

**INFORMATION:** Human CD235a (glycophorin A) is a sialoglycoprotein expressed early on the cell surface during erythropoiesis as pluripotent stem cells are recruited to differentiate into erythrocytes (1). CD235a (glycophorin A) is a useful marker to study the developmental biology of hematopoietic progenitor cells (2,3). Antibody A63-B/C2 reacts with an extracellular (peptide) domain of CD235a (glycophorin A).

**References:** 1. J.G. Mark, et al, (1999) Blood 93: 4425-4435. 2. N. Debili, et al, (1996) Blood 88: 1284-1296. 3. B.M. Frey, et al, (1998) Blood 91: 2781-2792.

**STORAGE CONDITIONS:** Store at 2 - 5°C. Freeze/thawing not recommended.

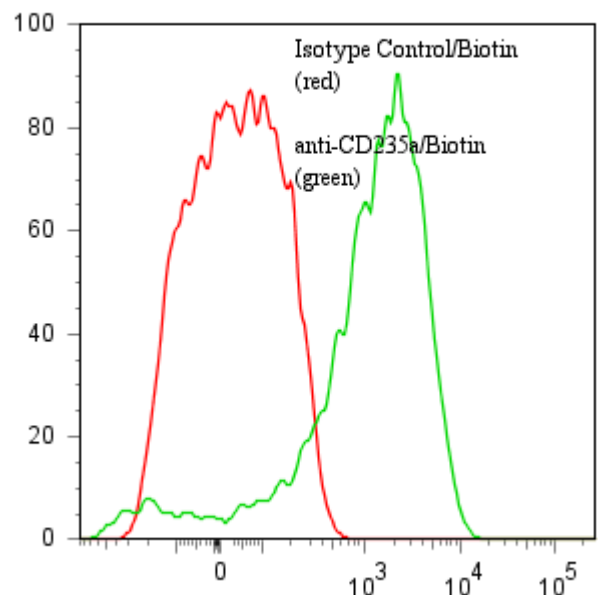
**PRODUCT STABILITY:** Product should retain activity for at least 12 months after shipping date when stored as recommended. Ship Date: \_\_\_\_\_

**BUFFER:** 50 mM Sodium Phosphate pH 7.5, 500 mM Potassium Chloride, 150mM NaCl, 5% Glycerol, 0.2% BSA, 0.04% NaN<sub>3</sub> (as a preservative).

**PRODUCTION:** Antibody from (low FBS containing) tissue culture supernatant was Protein A purified to >95% mouse immunoglobulin by SDS-PAGE (<1% bovine immunoglobulin), and reacted with NHS-Biotin. Unconjugated Biotin was removed from conjugate using a desalting column.

**PERFORMANCE:** Two µl per tube of freshly drawn heparinized human **whole blood** was washed and incubated 45 minutes on ice with 80 µl of anti-CD235a (Glycophorin A)/Biotin at **10 µg/ml**. Cells were washed twice and incubated with 2<sup>o</sup> reagent Streptavidin/R-Phycoerythrin (Catalog #253-050), after which they were washed three times and fixed. To avoid clots, fixed Red blood cells were vortexed and drip-filtered through a 35 µ nylon mesh filter prior to analysis by FACS. Cells stained positive with a mean shift of **1.45 log<sub>10</sub>** fluorescent units when compared to a Mouse IgM/Biotin negative control (Catalog #290-030) at a similar concentration. Binding was blocked when cells were pre incubated 10 minutes with 20 µl of 0.5 mg/ml anti-CD235a (Glycophorin A) antibody (Catalog #122-020).

### Binding of anti-CD235a/Biotin +SA/PE to human Red Blood Cells



\* **Research Use Only. Not for use in Diagnostic procedures.**