

**PERFORMANCE DATA SHEET**  
2212

**Monoclonal anti-human TCR C $\beta$ 1\***

**mAb name/Clone:** JOVI-1

**Isotype:** Mouse IgG2a

**Immunogen:** Human HA1.7 TCR  $\beta$  chain expressed on transgenic mouse cells

**CATALOG#:** 101-020

**QUANTITY:** 100  $\mu$ g

**CONCENTRATION:** 1.0 mg/ml

**INFORMATION:** Human T cell receptor (TCR) is a T cell surface expressed heterodimer of  $\alpha/\beta$  or  $\gamma/\delta$  chains. TCR's recognize antigen peptides bound to MHC molecules forming the basis of antigen specific response by T cells.

Antibody JOVI-1 recognizes human C $\beta$ 1 TCR gene product and reacts with 50-75% of T cells in normal human blood. Antibody JOVI-1 is mitogenic for T cells expressing TCR C $\beta$ 1.

**References:** J.L. Viney, et al, (1992) Hybridoma **11**: 701-713. A. Weiss, (1993) Cell **73**: 209-212. M.M. Daris, (1995) Nature **375**: 104. S. Valitutti, et al, (1995) Nature **375**: 148-151.

**STORAGE CONDITIONS:** Store at 2 - 8°C. Freeze/Thawing is not recommended.

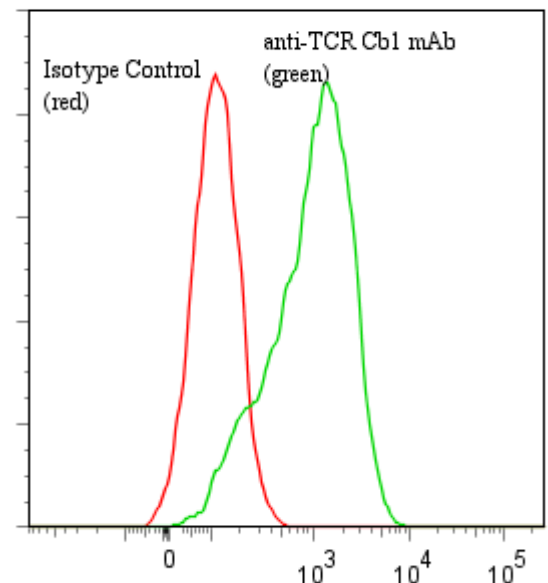
**PRODUCT STABILITY:** Product should retain activity for at least 12 months after shipping date when stored as recommended. Ship Date: \_\_\_\_\_

**BUFFER:** 50 mM Sodium Phosphate pH 7.5, 100 mM Potassium Chloride, 150mM NaCl, 0.5 mg/ml Gentamicin Sulfate (as a preservative).

**PRODUCTION:** Antibody was Protein A purified from (low FBS containing) tissue culture supernatant. Purity was >95% Immunoglobulin by SDS-PAGE and contains less than 1% Bovine Immunoglobulin.

**PERFORMANCE:** Five x 10<sup>5</sup> cultured Jurkat cells were washed and incubated 45 minutes on ice with 80  $\mu$ l of anti-TCR C $\beta$ 1 at 5  $\mu$ g/ml. Cells were washed twice and incubated with 2<sup>o</sup> reagent as described above, after which they were washed three times, fixed and analyzed by FACS. Cells stained positive with a mean shift of 1.03 log<sub>10</sub> fluorescent units when compared to a Mouse IgG2a negative control (Catalog #281-010).

**Binding of anti-TCR C $\beta$ 1 mAb +GAM/FITC to human Jurkat cells**



\* **Research Use Only. Not for use in Diagnostic procedures.**