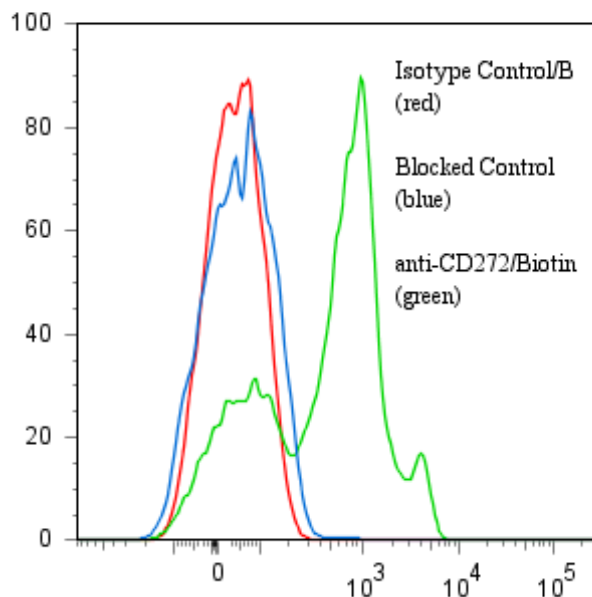


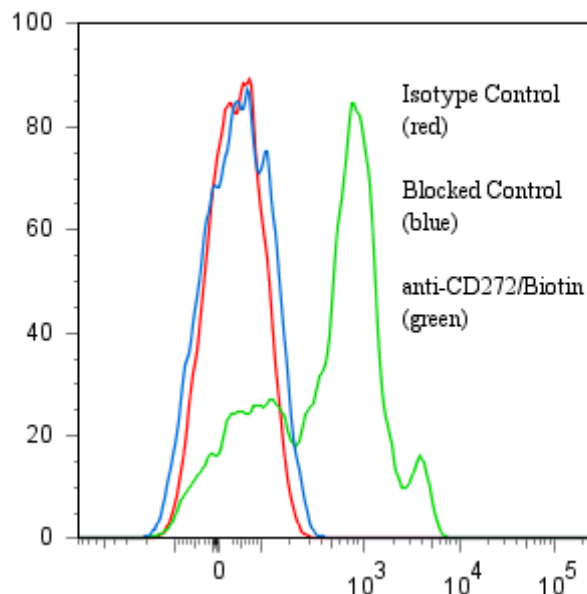
BTLA Research Tools

Two distinct anti-human CD272(BTLA) clones work well for cell surface Flow Cytometry; FITC, Biotin and PE conjugates available

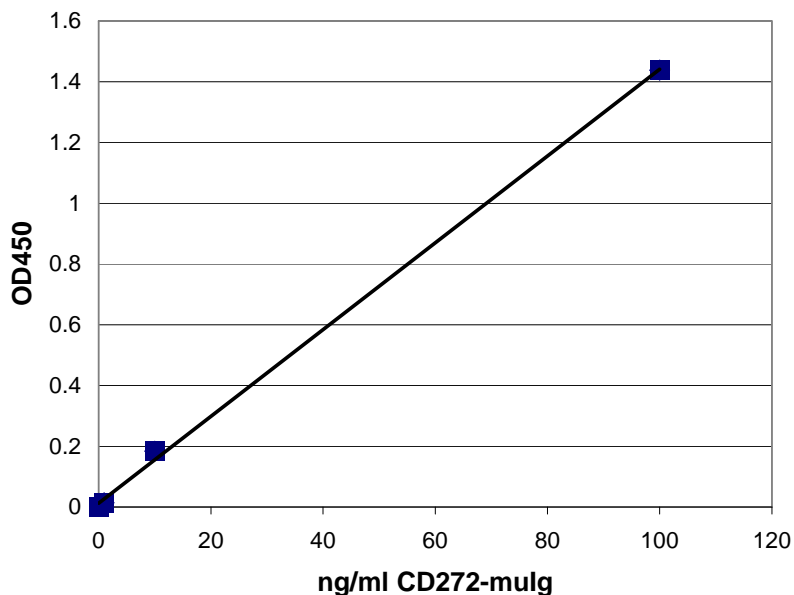
Binding of anti-CD272/Biotin (clone ANC6E6) +SA/PE to human PBMC



Binding of anti-CD272/Biotin (clone ANC5A5) + SA/PE to human PBMC



EIA detection of Recombinant CD272-mulg; ANC5A5 Capture, ANC6E9/Biotin Detect



These antibodies also work well as a matched pair for EIA detection of human CD272(BTLA) protein

Clone ANC6E9 Cat #272-020

Clone ANC5A5 Cat# 372-020