

PERFORMANCE DATA SHEET

2440

Monoclonal anti-human CD279(PD-1)*

mAb name/Clone: ANC4H6

Isotype: Murine IgG1κ

Immunogen: Recombinant human CD279

CATALOG#: 279-820 (Preservative free)

QUANTITY: 100 µg

CONCENTRATION: 1.0 mg/ml

INFORMATION: Human CD279 (PD-1, Programmed death 1) is a 55 kd Ig superfamily member with similarity to CD28 and CD152(CTLA-4). It is expressed on activated T and B and myeloid cells, and engagement by its ligands PD-L1 (CD274, B7-H1) or PD-L2 (B7-DC) can inhibit proliferation and cytokine expression. In mice blockade of PD-1 ligand interaction has been used to augment T cell anti cancer responses (3,4,5).

Anti-CD279 antibody clone ANC4H6 binds to CD279 present on PHA activated PBMC in FACS, and binds to recombinant CD279 in EIA. Pre incubation of recombinant CD279-coated plates with ANC4H6 blocks binding of biotinylated recombinant CD273 in EIA.

References: 1) Ishida et al. (1992) *EMBO J* **11**(11):3887-95. 2) Carreno BM, M Collins, et al. (2001) *Annu Rev Immunol* **20**:29. 3) MA Curran, Allison JP, et al. (2010) *PNAS* **107**(9): 4275-80. 4) Mangsbo SM, TH Totterman, et al. (2010) *J Immunotherapy* **33**(3):225. 5) Hirano F, L Chen, et al. (2005) *Canc Res* **65**: 1089.

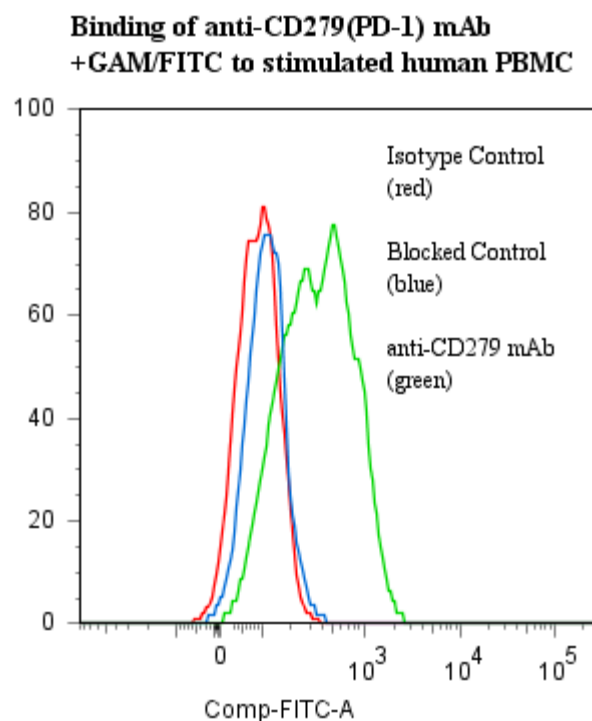
STORAGE CONDITIONS: Store at 2 - 5°C. Freeze/Thawing is not recommended.

PRODUCT STABILITY: Product should retain activity for at least 12 months after shipping date when stored as recommended. Ship Date: _____

BUFFER: 50 mM Sodium Phosphate pH 7.5, 100 mM Potassium Chloride, 150mM NaCl.

PRODUCTION: Antibody was Protein A purified from (low FBS containing) tissue culture supernatant. Purity was >95% Immunoglobulin by SDS-PAGE and contains less than 1% Bovine Immunoglobulin. Product was 0.2µ sterile filtered and viald under aseptic conditions.

PERFORMANCE: Ficoll prepared human peripheral blood mononuclear cells (PBMC) were stimulated 5 days in culture with 5 µg/ml Phytohemagglutinin (PHA). Five x 10⁵ cells per tube were pre incubated 10 minutes with 250 µg/ml human IgG (to block nonspecific binding) after which they were incubated 45 minutes on ice with 80 µl of anti-CD279 antibody at 10 µg/ml. Cells were washed twice and incubated with 2^o reagent Goat anti-Mouse IgG/FITC (Catalog #232-011), after which they were washed three times, fixed and analyzed by FACS. Cells stained positive with a mean shift of 0.6 log₁₀ fluorescent units when compared to a Mouse IgG1 negative control (Catalog #278-010). Binding was blocked when antibody was pre incubated with a 10-fold excess of recombinant CD279-muIg.



**Research Use Only. Not for use in Diagnostic procedures.*

Ansell Corporation P.O. Box 87 Bayport, MN 55003-0087 USA
Phone: Toll free 800-374-9523 or 651-439-0835 Fax: 651-439-1940