

## PERFORMANCE DATA SHEET

2539

### Monoclonal anti-human bcl-2\*

**mAb name/Clone:** Bcl-2/100

**Isotype:** Mouse IgG1

**Immunogen:** Human bcl-2 peptide 41-54

**CATALOG#:** 357-820 (Preservative Free)

**LOT#:** 254102

**QUANTITY:** 100 µg

**CONCENTRATION:** 1.0 mg/ml

**INFORMATION:** The human bcl-2 gene family plays a central role in lymphoid system cell survival. Continuous expression of bcl-2 protein is critical for preventing apoptosis of mature peripheral B and T cells. Antibody Bcl-2/100 recognizes the intracellular 26 kd bcl-2 protein.

**References:** F. Pezzella, et al, (1990) Am J Pathol **137**: 225-232. I.A. Doussis, et al, (1993) Am J Clin Pathol **99**: 663-667. S. Cory, (1995) Annu Rev Immunol **13**: 513-543.

**STORAGE CONDITIONS:** Store at 2 - 5°C. *Open under aseptic conditions.* Freeze/Thawing is not recommended.

**PRODUCT STABILITY:** Product should retain activity for at least 12 months after shipping date when stored as recommended. Ship Date: \_\_\_\_\_

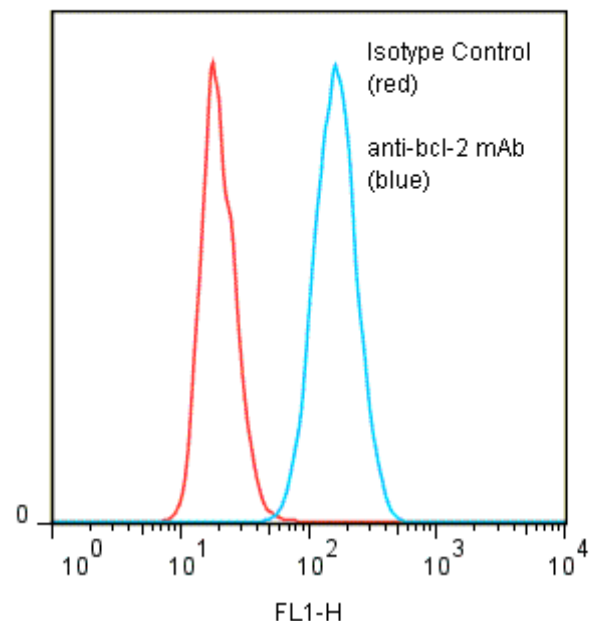
**BUFFER:** 50 mM Sodium Phosphate pH 7.5, 100 mM Potassium Chloride, 150mM NaCl.

**PRODUCTION:** Antibody was Protein A purified from (low FBS containing) tissue culture supernatant. Purity was >95% Immunoglobulin by SDS-PAGE and contains less than 1% Bovine Immunoglobulin. Product was 0.2 µm filtered and vialled under aseptic conditions.

**PERFORMANCE:** Cultured Nalm-6 human tumor cells were fixed for 30 min with 2% buffered formaldehyde after which they were washed two times. Subsequent reagent incubations and washes were done using a buffer containing 0.3% Saponin to permeabilize cells. Five x 10<sup>5</sup> cells per tube were preincubated ~5 minutes with 20µl of 250 µg/ml human IgG (to block non specific binding) after which they were incubated 45 minutes on ice with 80µl of anti-bcl-2 antibody at 5 µg/ml. Cells were then washed twice and incubated with 2<sup>o</sup> reagent Goat anti-Mouse IgG/FITC (Catalog #232-011), after which they were washed three times, fixed and analyzed by FACS. Cells stained with a mean shift of 0.82 log<sub>10</sub> fluorescent units when compared to a Mouse IgG1 negative control (Catalog # 278-010).

*\*This Product is intended for Laboratory Research use only.*

#### Binding of anti-bcl-2 mAb to human fixed permeabilized Nalm-6 cells with GAM/FITC



**Ancell Corporation P.O. Box 87 Bayport, MN 55003-0087 USA**  
**Phone: Toll free 800-374-9523 or 651-439-0835 Fax: 651-439-1940**